



Diverse Subcontractor and Supplier Outreach

March 2, 2023

5:00 p.m. CST

PHASE I

**OF THE I-10: LA 415 TO ESSEN LANE ON I-10 AND I-12
CONSTRUCTION MANAGEMENT AT RISK PROJECT**

WELCOME!



Diverse Subcontractor and Supplier Outreach

March 2, 2023

5:00 p.m. CST

PHASE I

**OF THE I-10: LA 415 TO ESSEN LANE ON I-10 AND I-12
CONSTRUCTION MANAGEMENT AT RISK PROJECT**

Agenda

- Welcome Remarks
- Kiewit/Boh Team Introduction
- CMAR Process Overview
- Project Overview
- EWP 3 Scope & Opportunities (100% Design)
- Upcoming Opportunities
- Next Steps
- Closing Remarks

Kiewit/Boh Team Overview



Kiewit Corporation brings extensive nationwide experience on CMAR and design-build projects. Kiewit Corporation subsidiaries have completed over \$3B worth of projects in Louisiana over the last 15 years.



Boh Bros. is a Louisiana born, family-owned, third-generation company built on knowledge, experience, respect and results. Boh Bros. has five locations throughout southeast Louisiana, including Baton Rouge.

Kiewit/Boh, AJV
(Kiewit/Boh) is a joint venture between Kiewit Infrastructure South Co. and Boh Bros. Construction Co., LLC (Boh Bros.), with James Construction Group, LLC (JCG) as a major subcontractor.

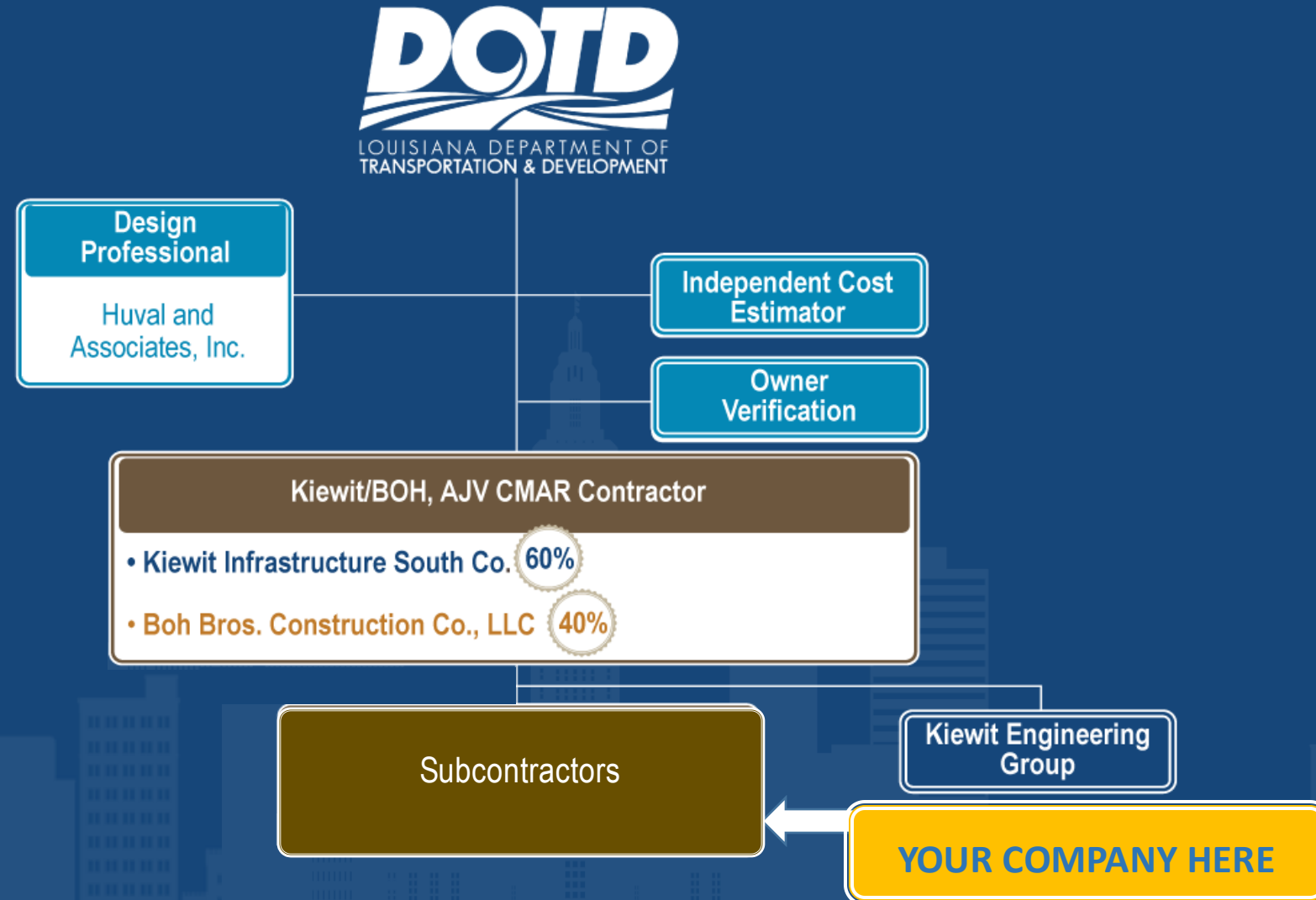
With major Subcontractor: James Construction Group (JCG)

We're Building More than Roads

Kiewit/Boh maximizes opportunities for small and diverse businesses through:

- Dividing work into economically feasible packages to assist diverse-owned businesses and ensure equitable and meaningful participation
- Actively seeking out diverse businesses that will bring additional value to our projects
- Building upon new and existing subcontractor relationships to foster long-term partnerships
- Fostering the development and growth of existing and potential diverse business partners
- Partnering with community and industry organizations focused on supporting small and diverse businesses

Phase I Project Organization



Construction Manager At-Risk Defined

Construction Manager-at-Risk (CMAR)

The owner hires two firms:
the designer and the
construction manager (CM).

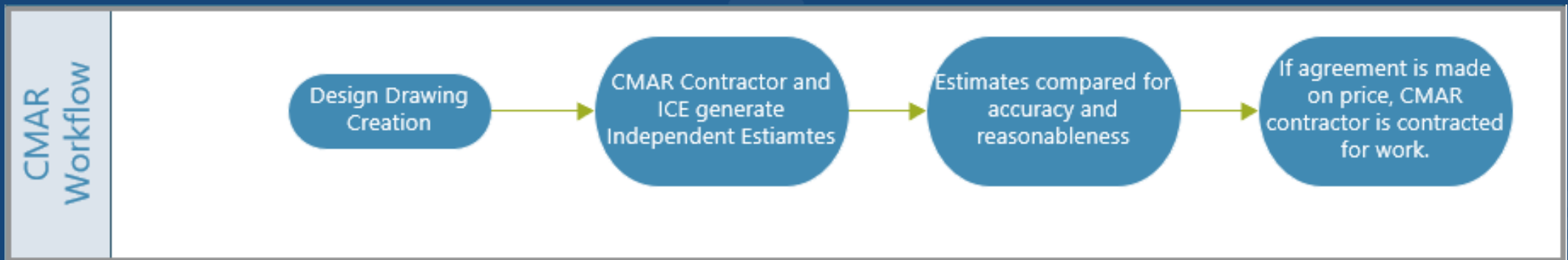
The CM acts as a consultant
during design and as a general
contractor during construction.



The CM provides constructability input, procures
equipment and builds the project for a fixed price.

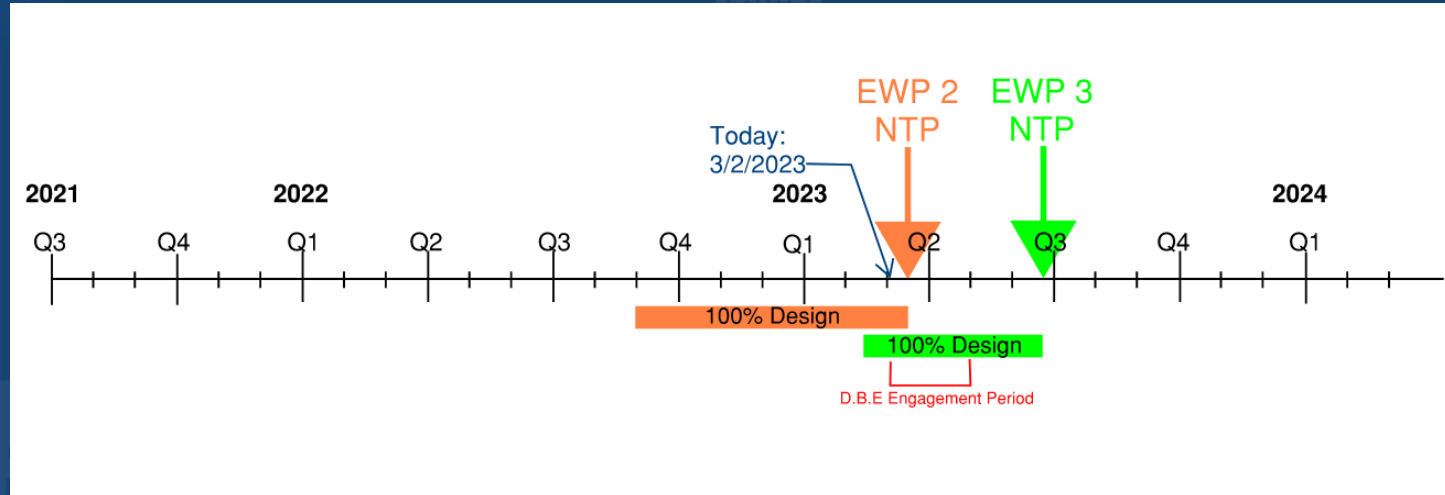
CMAR Process Details

- The CMAR process allows for multiple iterations of design and cost estimating.
 - The design team produces 30%, 60%, 90% and 100% drawings for the project
 - Can be broken down to smaller packages of the whole (i.e stages or defined pieces of work)
 - The CMAR Contractor will provide cost estimates at each stage of design to submit to Owner.
 - These estimates are compared in detail with the Independent Cost Estimator to confirm pricing is reasonable.



CMAR Process for Subcontractors

- 60% Package Estimates – Subcontractors review bid packages that they are interested in and provide pricing for review & budgetary purposes.
 - Recommend how packages may better fit your business (i.e package size, combining multiple packages, etc)
- 90% Package Bids – Subcontractor provide hard bids used to select contractors in most cases.
 - Between 90% and 100% we will work with chosen subcontractors on any adjustments, etc. and finalize contracting.



Project Overview: I-10: LA 415 to Essen Lane on I-10 and I-12

Project Description:

The I-10: LA 415 to Essen Lane on I-10 and I-12 CMAR Project is the largest urban interstate reconstruction project in history of the Louisiana Department of Transportation.

The project consists of widening and reconstruction of the I-10 east and westbound lanes from three lanes to four lanes. The major improvements include bridge replacement and rehabilitation, interchange and ramp modifications, shoulder widening, and auxiliary lane(s).

Project Phases:

- **Phase I :** The limits of Phase 1 extend from the Mississippi River Bridge to Essen Lane on I-10.
- **Phase II:** The limits of Phase 2 extend from LA 415 to the Mississippi River Bridge (design expected in 2025).

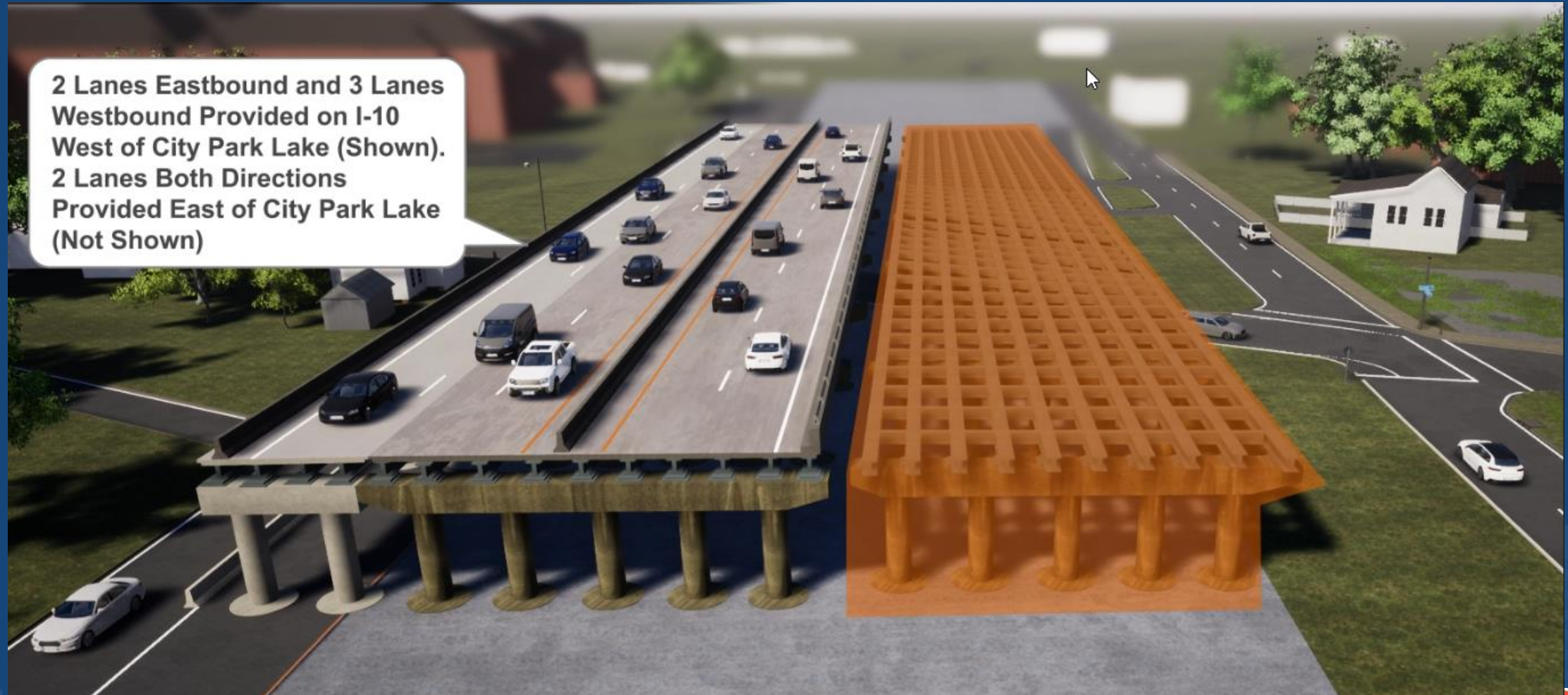
Phases organized into Segments

Kiewit/Boh is the Construction Manager at Risk for preconstruction services for Phase 1

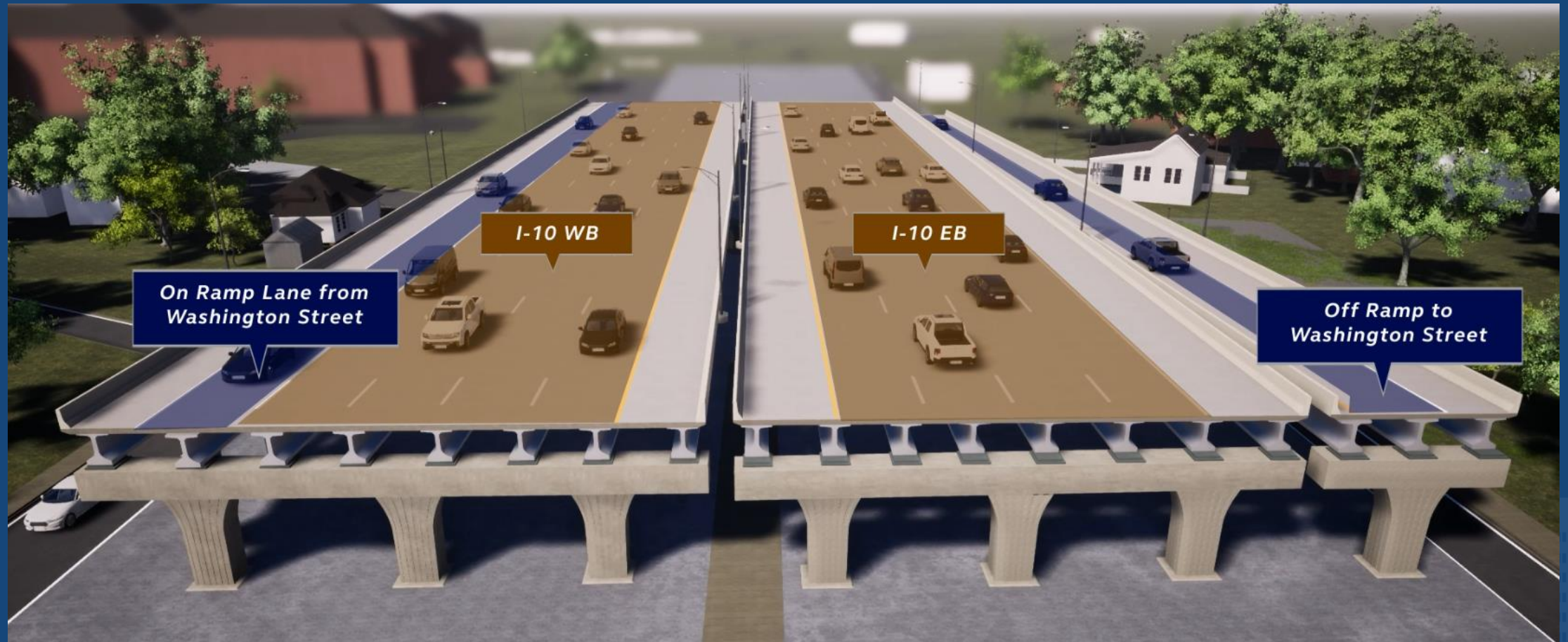
Project Overview: I-10: LA 415 to Essen Lane on I-10 and I-12



Project Overview: I-10: LA 415 to Essen Lane on I-10 and I-12



Project Overview: I-10: LA 415 to Essen Lane on I-10 and I-12



Phase I: I-10: LA 415 to Essen Lane on I-10 and I-12

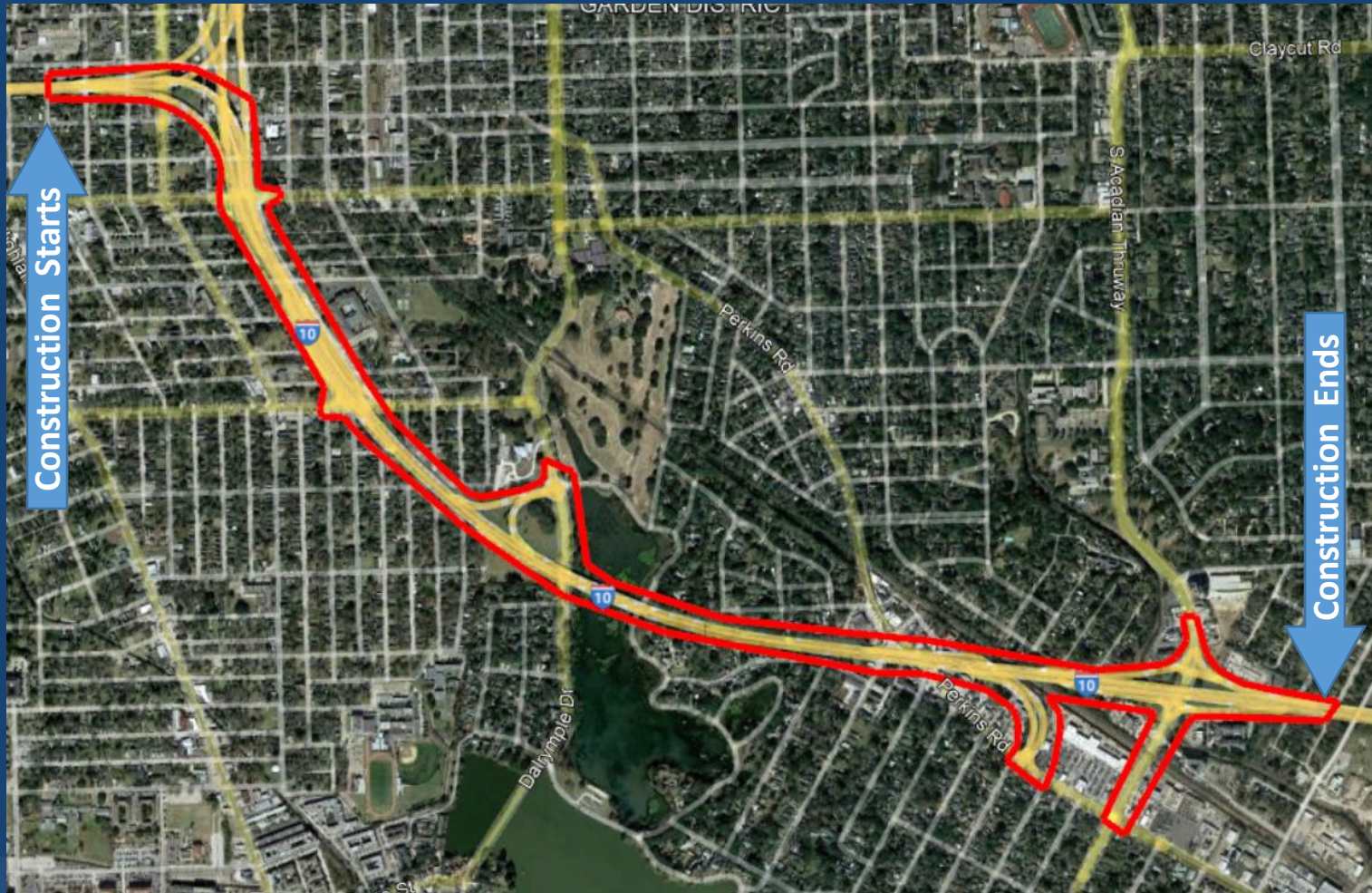
Divided into Segments (Segments 1 & 2)

Segment 1 (Current Work)

- Comprised of 5 Early Works Packages (EWPs)
 - Design at 100% for EWP 1 & 2
 - Kiewit/Boh awarded construction services contract for EWP 1 (EWP 2 construction services contract being finalized)
 - Design nearing completion for EWP 3 (currently soliciting bids for EWP 3 100% design)
- Following design completion and LA DOTD approval, construction services contracts will be awarded for the remaining Early Works Packages in Segment 1

Segment 2 (Future Design & Construction)

Phase I of the I-10: LA 415 to Essen Lane on I-10 and I-12 – Segment 1 Limits



LA DOTD Project Goals

- Successful collaboration, communication, and partnering between the CMAR Contractor, the Independent Cost Estimator (ICE), and the Design Professional throughout the Pre-Construction Services Phase;
- Innovative cost savings measures and construction methods
- CMAR Contractor input during design review pertaining to constructability, means and methods, sequencing, temporary works, cost, and schedule
- Minimized inconvenience to the traveling public during construction;
- Design and construction that minimize impacts to the surrounding property and business owners;
- Innovative means and methods of construction while remaining within the corridor established by the NEPA documents;
- Compliance with the Permits, Mitigations and Commitments outlined in the Environmental Assessment (EA); and
- Completion within the agreed budget and schedule.

DBE Goals & Certification Requirements

Kiewit/Boh is committed to meeting the 15% DBE goal established by the LA DOTD for the Project.

- DBE firms must be certified by the Louisiana Unified Certification Program for participation to be counted toward established goals.
- For more information on the DBE certification process and requirements, visit: **<http://www8.dotd.la.gov/ucp/>** or contact the **LA DOTD DBE/SBE Program Manager** at (225) 379-1762.

Phase 1, Segment 1 Construction Services Schedule*

Stages Of Construction	2023				2024				2025				2026				2027				2028				Duration Months
	Q1	Q2	Q3	Q4	Q1	Q2	Q3	Q4	Q1	Q2	Q3	Q4	Q1	Q2	Q3	Q4	Q1	Q2	Q3	Q4	Q1	Q2	Q3	Q4	
Stage 1																									18.2
Stage 2																									12.0
Stage 3																									9.9
Stage 4																									14.3
Stage 5																									2.2
Total Duration (Stages 1 - 5)																									56.7

*Durations are subject to change based on design and sequencing

Project Overview: I-10: LA 415 to Essen Lane on I-10 and I-12



EWP 3 Scope: Stage 1 Construction – Terrace to Washington

- Red: Permanent Bridge Construction
- Yellow: Temporary Construction (At-Grade / Structures)
- Green: Permanent At-Grade



EWP 3 Scope: Stage 1 Construction – Perkins

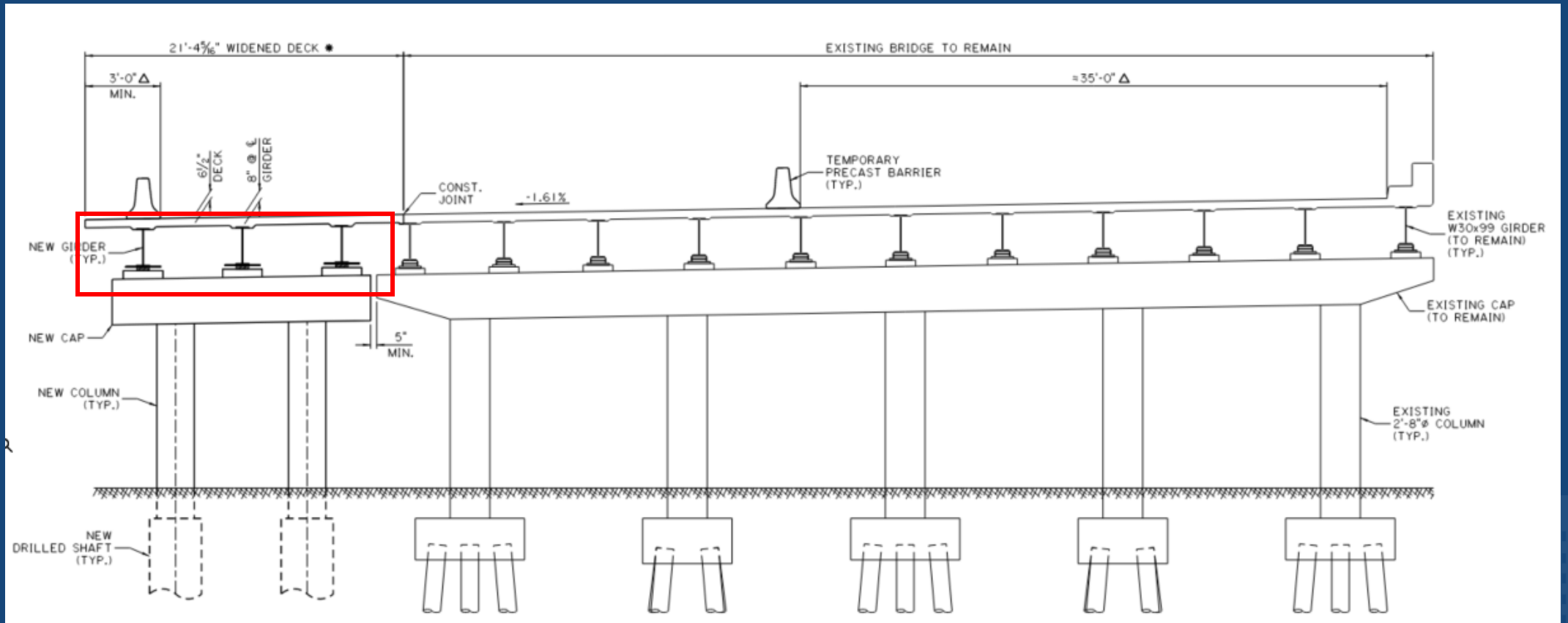
- Red: Permanent Bridge Construction
- Yellow: Temporary Construction (At-Grade / Structures)



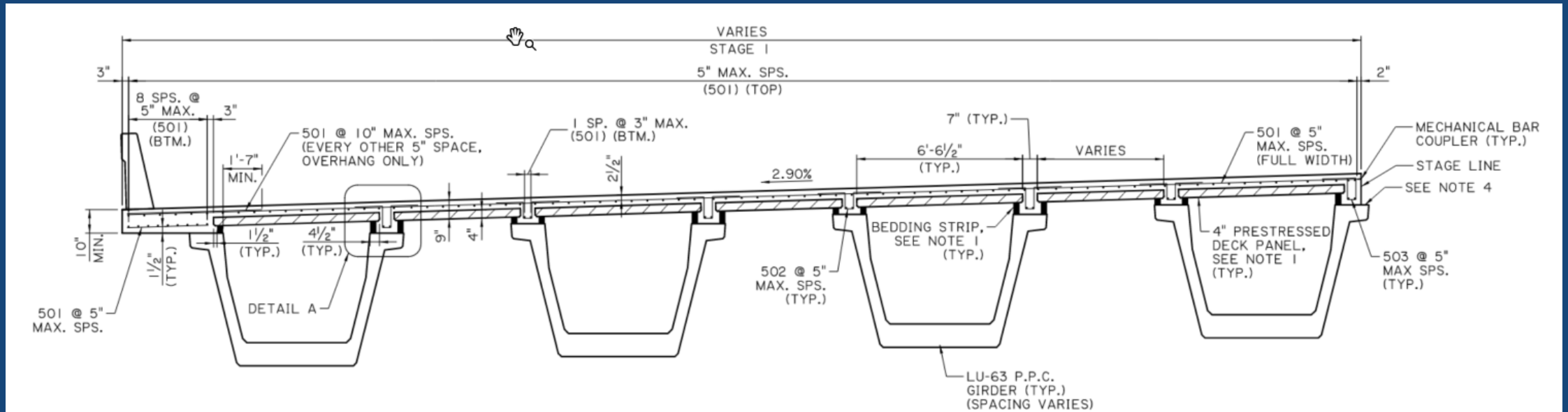
Previously Self-Performed Scopes

- Barrier Furnish and Install
- Temporary Steel Girder Erection Furnish and Install
- Precast Deck Panels Furnish and Install
- Cast in Place Retaining Walls
- MSE Walls

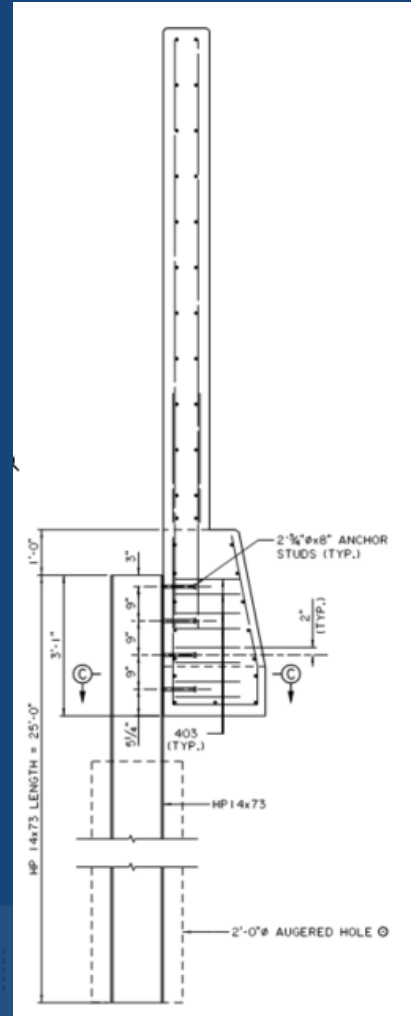
EWP 3 Scope: Temporary Steel Girder Erection Furnish and Install



EWP 3 Scope: Precast Deck Panels Furnish and Install

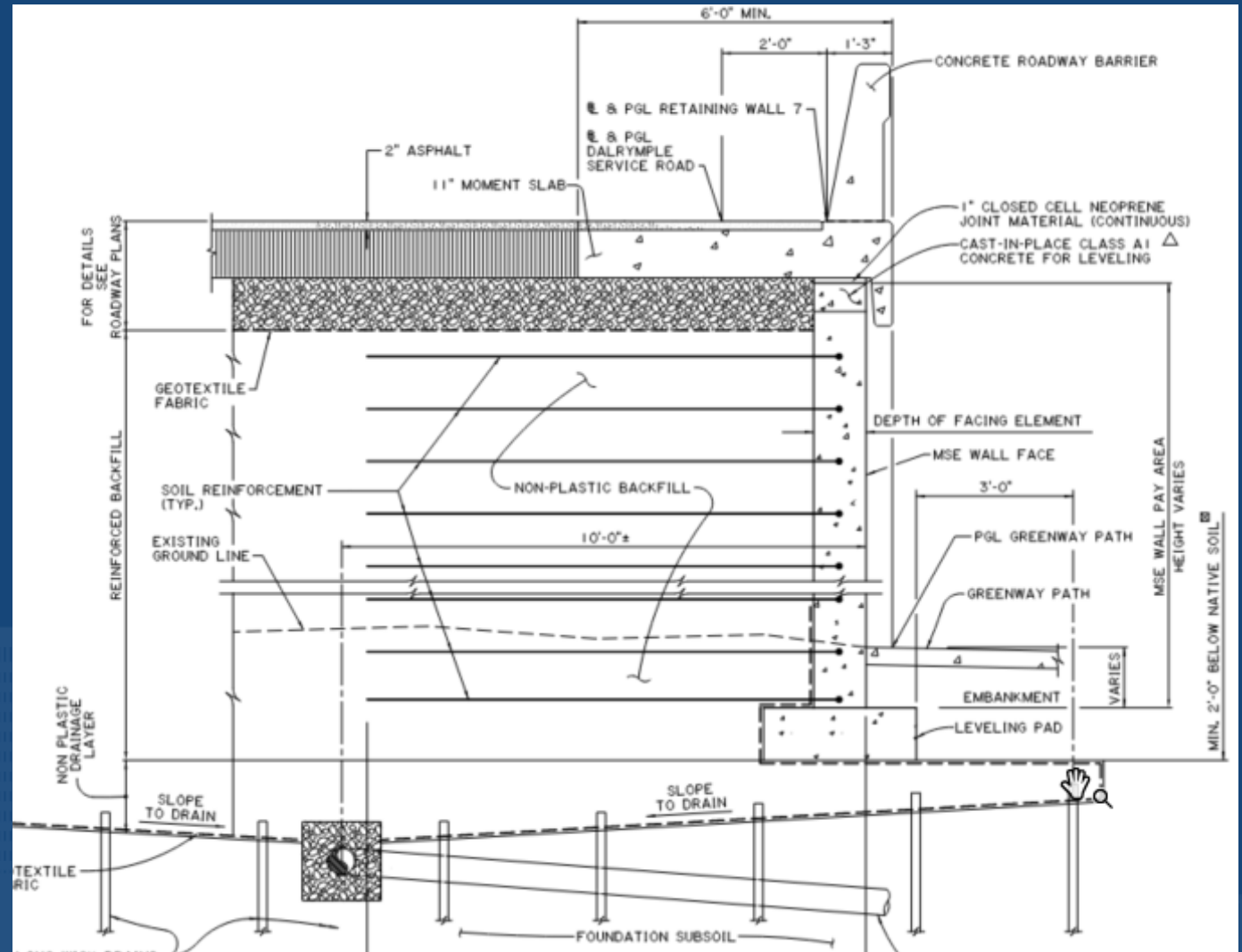


EWP 3 Scope: Cast in Place Retaining Walls

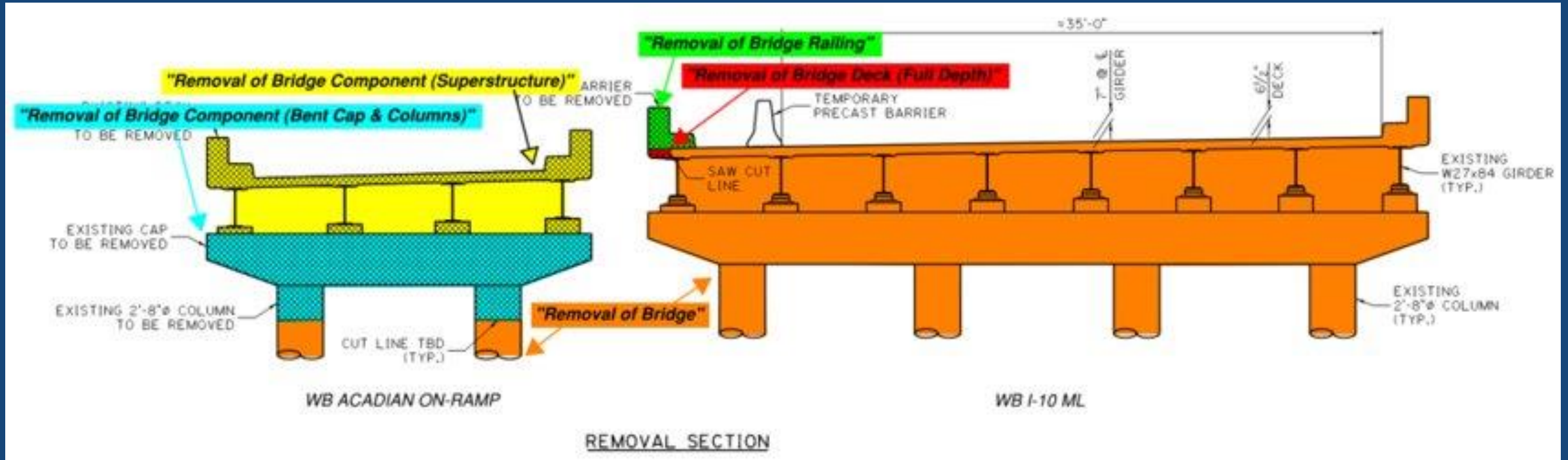


EWP 3 Scope: MSE Wall Install

- 1,200 LF
- 18,000 SF
- Average height 15'



EWP 3 Scope: Demo Sawcut



EWP 3 Subcontractor/Supplier Opportunities

Kiewit/Boh is now actively seeking subcontractor bids and material quotations for Early Works Package 3 (100% Design).

- All bid packages are available on BuildingConnected.

***Bids are due to Kiewit/Boh on
Friday 3/17/23
at 5:00 pm local time.***

What if my company submitted pricing at 90% design?

EWP 3 Subcontractor Opportunities (Currently at 100%)

All bid packages are available on BuildingConnected. Bids are due to Kiewit/Boh on Friday 3/17/23 at 5:00 pm local time.

Scopes of work include (but are not limited to):

- Asphalt Paving
- Bridge Drainage
- Bridge Rehab
- Bridge Painting
- Cellular Concrete
- Chemical Toilets
- Clear & Grub
- Concrete Flatwork
- Concrete Barrier
- Concrete Pavement Breaking
- Concrete Pumping
- Crosshole Sonic Load Test
- Deck Grinding/Grooving
- Drainage
- Dredging
- Drilled Shafts
- Electrical / Lighting
- Erosion Control
- Fencing
- Fuel
- Guardrail
- ITS/Traffic Signals
- Landscaping
- Lead Abatement
- Load Cell Test
- Mailboxes
- Maintenance of ROW
- Milling
- MOT
- Noise & Vibration
- Noise Wall
- Painting (Class 3 Finish)
- Potholing
- Project Security
- Quality Control
- Queue Detection
- Rebar Install
- Rumble Strips
- Saw Cutting & Coring
- Signage
- Striping (Permanent & Temporary)
- Shaft Install
- Shaft Load Testing & NDT
- Temporary Precast Concrete Barrier (Install)
- Thermal Integrity Profiling
- Treated Subgrade
- Trucking
- Welding
- Wet Utilities

EWP 3 Supplier Opportunities (Currently at 100%)

- Bridge Drainage
- Aggregates (Sand/Base Course)
- Anchor Bolts
- Bearing Pads
- Borrow & Waste Site
- Bridge Drainage (Scuppers, etc)
- Bridge Joints
- Cement & Lime (Treated Subgrade)
- Concrete (1)
- Crane Mats
- Fabric/Geotextiles
- Form Lumber & Plywood
- Formliner
- Formwork Purchase
- Formwork Rental
- Metal Sheets (Temporary)
- Noise Wall
- Overhang Jacks & Spanalls
- Permanent Casing
- Permanent Sheets
- PMD Decking
- Precast Concrete Deck Panels
- Precast Concrete Fasia
- Precast Concrete Girder – LU Girders
- Precast Concrete Girder (Not LUs) (2)
- Precast Concrete Pile
- Rebar (3b)
- Sewer Line Pipe & Appurtenances
- Steel Materials (H-Pile) (Permanent) (4)
- Storm Sewer Pipe
- Storm Sewer Structures
- Tack Coat
- Trench Box (Rental & Purchase)

**We also encourage participation by local, small, and diverse companies seeking to provide ancillary services, such as catering, printing, and office supplies.*

Phase I Early Works Schedule (Upcoming Packages)

EWP 4

- 60% Design – November 2023
- 90% Design – January 2024
- 100% Design- March 2024
- Construction Start: Q2 2024

EWP 5

- 60% Design – August 2023
- 90% Design – March 2024
- 100% Design- August 2024
- Construction Start: Q1 2025

Access Bid Opportunities

Follow this link to see current project bid opportunities:

<https://app.buildingconnected.com/public/624dae3f7037df00b983ca25/projects/63becf110814a70045b85354>

Kiewit/Boh will notify firms of open solicitations/opportunities via direct email (to database), B2gNOW, BuildingConnected, our project website, and various local publications.

- Solicitation notices will include targeted scopes, qualifications sought, and submittal instructions

Next Steps: Working with Kiewit/Boh

Step 1: Complete our Subcontractor Questionnaire to join our database and help us understand your capabilities and bidding interests.

Step 2: Sign-up for ***BuildingConnected*** to be added to our bidder's list!

- Create an account with Building Connected
<https://app.buildingconnected.com/create-account>
- Follow this link to see ALL project bid opportunities:
<https://app.buildingconnected.com/public/624dae3f7037df00b983ca25>

KBJV utilizes BuildingConnected for bid solicitations and vendor communications regarding plans/specs/addenda.

The screenshot shows a web form titled "I-10: LA to Essen Lane on I-10 and I-12 Phase I" with a "Subcontractor Questionnaire" section. The form includes the following fields and options:

- First Name *
- Last Name *
- Company Name *
- Email *
- Phone Number *
- Address *
- Website / URL *
- Type of Work: *
 - ☐ Professional Services
 - ☐ Construction
 - ☐ Vendor/Supplier
- Please indicate the NAICS codes/services your company performs: *
- Firm Description (Max 100 Words): *
- Please attach capability statement, if available:
 - Drag and drop files here or [browse files](#)
- How many employees does your organization have?

What does it take to work with us?

We evaluate companies on different criteria based on specific project requirements. This may include, but is not limited to:

- ✓ Safety performance
- ✓ Proven quality
- ✓ Certification
- ✓ Insurance and bonding capability
- ✓ On-time performance
- ✓ Years in business
- ✓ Reputation
- ✓ Past performance with JV team members or Client
- ✓ Value-added products or services

Equity • Inclusion • Opportunity • Growth

Resources and Assistance

Kiewit/Boh is committed to providing information and resources to assist firms seeking opportunities to participate on the Project.

- Project Website
- Bidders' Quick Reference Guide
- "Roadside Assistance" Workshop Series
 - *Stay tuned for upcoming dates!*

The image displays two overlapping screenshots from the Kiewit/Boh project website. The top screenshot shows the 'Resources' page with a city skyline background and a yellow box titled 'ORGANIZATIONS AND RESOURCES FOR SMALL, LOCAL AND DISADVANTAGED BUSINESS ENTERPRISES'. The bottom screenshot shows the 'BIDDER'S QUICK REFERENCE GUIDE - NEXT STEPS AND RESOURCES' page, which includes sections for 'JOIN OUR DATABASE!', 'STAY INFORMED!', 'GOAL AND CERTIFICATION INFORMATION', and 'CONNECT WITH US!'. The guide also features a list of federal agencies and a list of organizations for small, local, and disadvantaged business enterprises.

ORGANIZATIONS / RESOURCES FOR SMALL DISADVANTAGED BUSINESS ENTERPRISE

Kiewit/Boh is committed to providing resources, information, and support to assist firms seeking opportunities to participate on the Project.

Federal

- U.S. Department of Commerce, Minority Business Development
- U.S. Department of Transportation
- U.S. Department of Homeland Security

PHASE I OF THE I-10
LA 415 TO ESSEN LANE ON I-10 AND I-12
CONSTRUCTION MANAGEMENT AT RISK PROJECT

KIEWIT BOH
A JOINT VENTURE

BIDDER'S QUICK REFERENCE GUIDE - NEXT STEPS AND RESOURCES

JOIN OUR DATABASE!

To help us understand your capabilities and bidding interests and ensure that you are notified about upcoming project opportunities, complete the following:

- 1 Complete Our Subcontractor Questionnaire
- 2 Create an account with BuildingConnected at buildingconnected.com

Once your company information has been received through our Subcontractor Questionnaire, you will receive an invitation to bid via BuildingConnected for available packages your company has expressed an interest in bidding.

STAY INFORMED!

Kiewit/Boh is committed to keeping you informed. Visit our website for project information and potential bid opportunities.

GOAL AND CERTIFICATION INFORMATION

Kiewit/Boh is committed to exceeding the 7% pre-construction and 15% construction DBE goals established by the LA DOTD for the Project. DBE firms must be certified by the Louisiana Unified Certification Program for participation to be counted toward established goals.

For more information on the DBE certification process and requirements, visit:
<http://www8.dotd.la.gov/ucp/> or contact the DBE/SBE Program Manager at (225) 379-1762.

CONNECT WITH US!

QUESTIONS?

Email: J-10CMAROutreach@Kiewit.com

Visit: www.buildwithKiewit-Boh.com

ORGANIZATIONS AND RESOURCES FOR SMALL, LOCAL AND DISADVANTAGED BUSINESS ENTERPRISES

We're building more than infrastructure: we're building opportunities. Kiewit believes in partnering and investing in the local, small, and diverse businesses in the communities where we work and live.

Chamber of Commerce
American Chamber of
Supplier Development Council
Office of Fair Share
Unified Certification Program (LA
Women's Business
Administration - Louisiana District
Small Business
South
Southwest Council (WBC) South
Greater Baton Rouge

Stay Tuned for Future Events

Kiewit/Boh is seeking opportunities to engage with local, small, and diverse companies interested in performing work on the Project.

Stay tuned! Information on future events will be shared via email, B2gNOW, and our project website.

**AIM YOUR SMART PHONE
CAMERA HERE**
TO ADD US TO YOUR CONTACTS.



Email:

I-10CMAROutreach@kiewit.com



Website:

www.buildwithkbjv.com



Diverse Subcontractor and Supplier Outreach

PHASE I

**OF THE I-10: LA 415 TO ESSEN LANE ON I-10 AND I-12
CONSTRUCTION MANAGEMENT AT RISK PROJECT**

Thank you for joining us!