



# **Diverse Subcontractor and Supplier Outreach**

**March 10, 2022**

**10:30 a.m. CST**

## **PHASE I**

**OF THE I-10: LA 415 TO ESSEN LANE ON I-10 AND I-12  
CONSTRUCTION MANAGEMENT AT RISK PROJECT**

***The presentation will begin shortly. Please “sign in” by typing your name and company in the Q&A panel at the right side of the screen.***



# **Diverse Subcontractor and Supplier Outreach**

**March 10, 2022**

**10:30 a.m. CST**

## **PHASE I**

**OF THE I-10: LA 415 TO ESSEN LANE ON I-10 AND I-12  
CONSTRUCTION MANAGEMENT AT RISK PROJECT**

# Microsoft Teams LIVE – Quick Tips

- All attendees are MUTED and are invited to participate through Q&A throughout the event.
- To ask a question, select Q&A on the right side of screen, type your question, and click send.
- If you experience technical difficulties, please exit event and reenter.
- Attendees may experience a slight delay during slide transition.



***This event is being recorded.***

# Agenda

---

## Part 1:

- Welcome Remarks
- Kiewit/Boh Team Introduction
- Project Overview
  - Anticipated Subcontract Opportunities
- Working with Kiewit/Boh AJV
- Questions & Answers

## Part 2:

- Technical Assistance and Resource Overview
- Kiewit/Boh AJV
- Resource Partner Presentation: Louisiana Chamber Of Commerce Foundation Inc.
- Resource Partner Presentation: SJB Group
- Questions & Answers

# Kiewit/Boh Team Member Introductions

---

- Kelli Kelly - Economic Inclusion Lead
- Harry Koenigs – Pre-Construction Manager
- Erich Jones - Structures Manager
- Hugh Harrison - DBE Manager
- Nick Fleming - DBE Outreach and Engagement
- Britt Walter - Supplier Diversity Manager

# Kiewit/Boh Team Overview



Kiewit Corporation brings nationwide experience on more than \$7.1B of CMAR and design-build projects in 2019 alone. In addition, Kiewit Corporation subsidiaries have completed \$3B worth of projects in Louisiana over the last 15 years.



Boh Bros. is a Louisiana born, family-owned, third-generation company built on knowledge, experience, respect and results. For over 110 years Boh Bros. has consistently demonstrated an ability to solve problems and bring predictably superior results to its projects while honorably serving its communities. Boh Bros. has five locations throughout southeast Louisiana, including Baton Rouge.

**Kiewit/Boh, AJV**  
(Kiewit/Boh) is a joint venture between Kiewit Infrastructure South Co. and Boh Bros. Construction Co., LLC (Boh Bros.), with James Construction Group, LLC (JCG) as a major subcontractor.

***With major Subcontractor: James Construction Group (JCG)***

# Kiewit/Boh Team Highlights



Kiewit  
member  
in this  
and un  
the co



Exp  
**70**  
CMO



Success  
of collabor  
communic  
partnerin  
team me



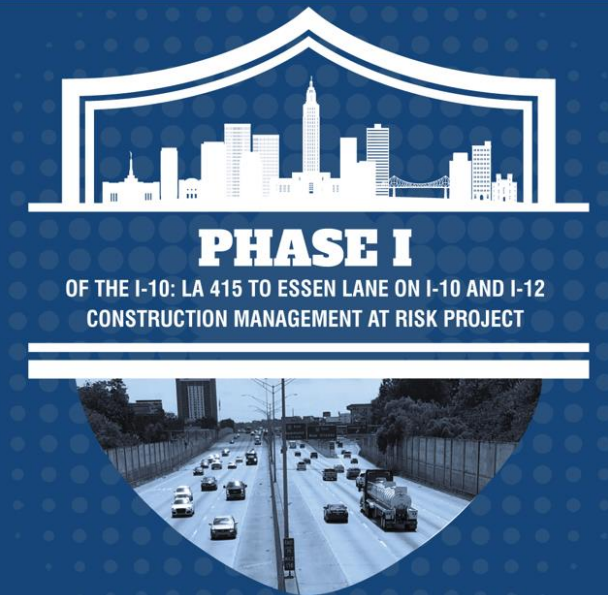
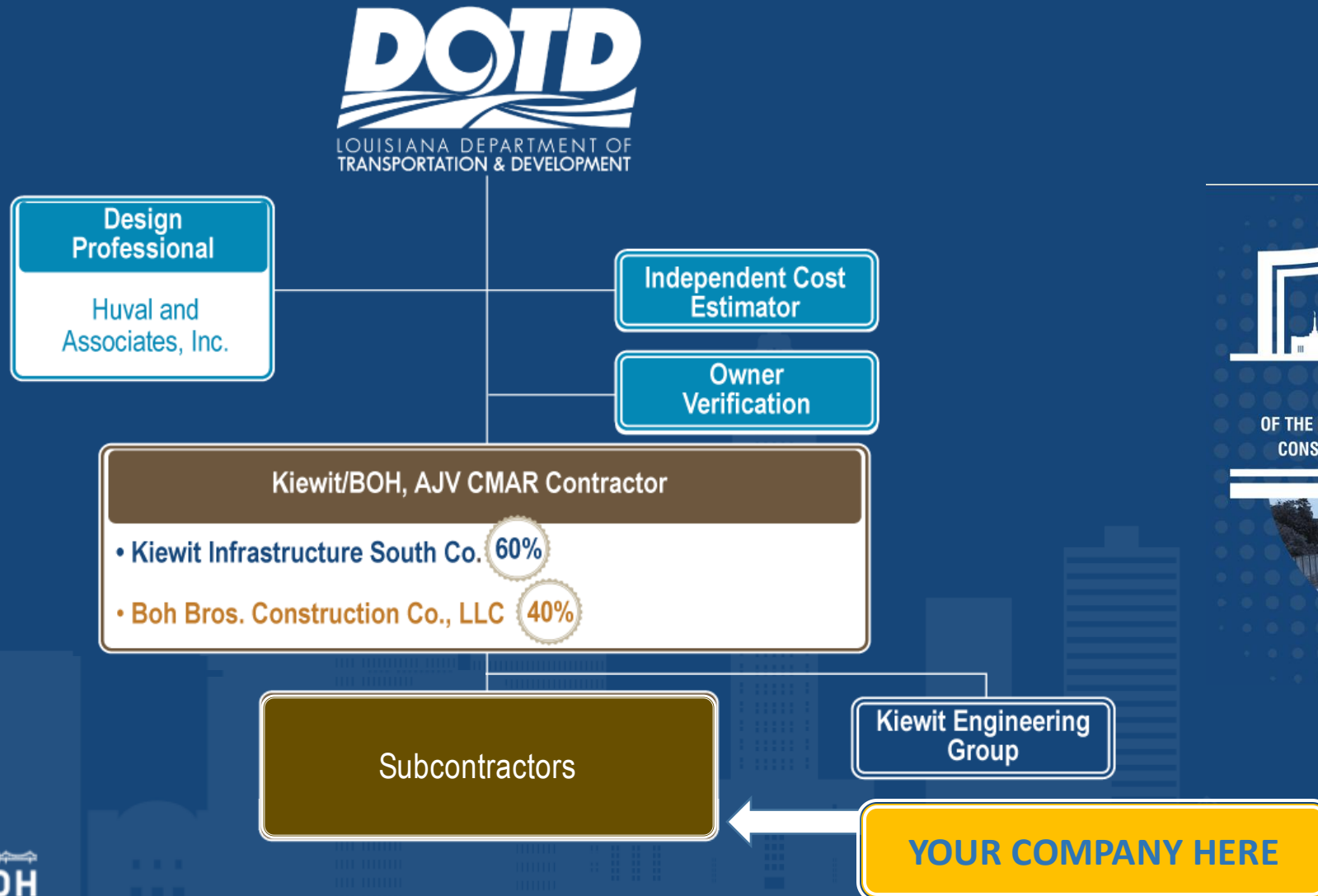
Engager  
opportu



Project will be completed  
safely and within the  
agreed budget  
and schedule



# Phase I (Segment 1) Project Organization





# Track Record of Successful Partnerships with LA DOTD and the DBE Community

**We are committed to  
exceeding the 15% Goal!**

Project	DBE Goal	Achieved
Wisner Blvd. Bridge Replacement	7%	7.27%
I-10: Clearview Causeway:	7%	20%
LA300 Florissant Hwy – LA300	2.91%	6.92%
I-310: I-10 to US90	11%	15.23%
I-210 Prien Lake Re-Deck and Safety Improvements	6%	7.35%



# Project Overview: I-10: LA 415 to Essen Lane on I-10 and I-12

## Project Description:

The I-10: LA 415 to Essen Lane on I-10 and I-12 CMAR Project is the largest urban interstate reconstruction project in history of the Louisiana Department of Transportation.

The project consists of widening and reconstruction of the I-10 east and westbound lanes from three lanes to four lanes. The major improvements include bridge replacement and rehabilitation, interchange and ramp modifications, shoulder widening, and auxiliary lane(s).

## Project Phases:

- **Phase I :** The limits of Phase 1 extend from the Mississippi River Bridge to Essen Lane on I-10.
- **Phase II:** The limits of Phase 2 extend from LA 415 to the Mississippi River Bridge.
- Phases are organized into Segments

**Kiewit and Boh Bros. Construction, A Joint Venture (Kiewit/Boh) is currently under contract as the Construction Manager at Risk for preconstruction services for Phase 1 (Segment 1).**

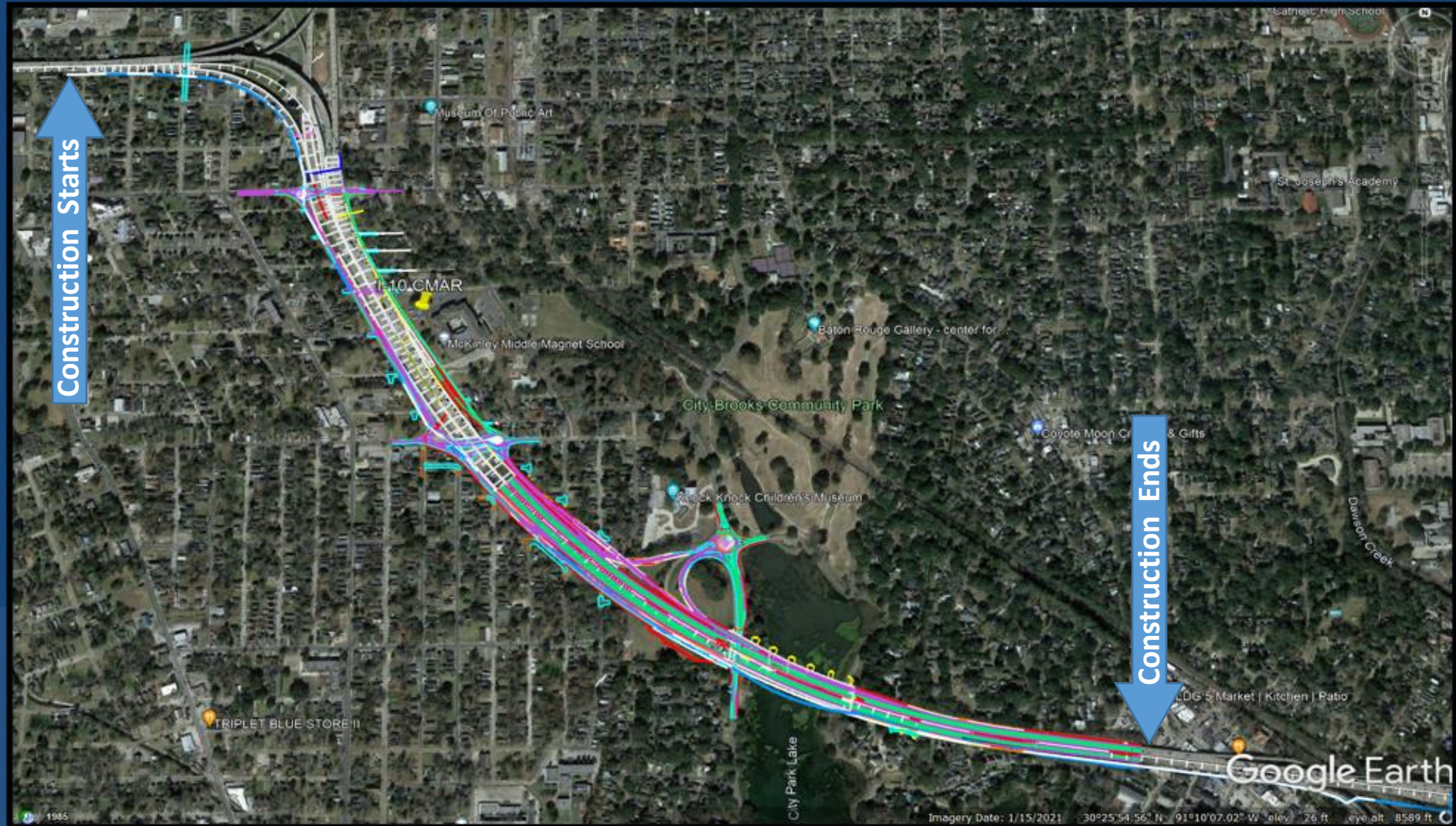
# Phase I (Segment 1) Project Details

---

- **Owner:** Louisiana Department of Transportation and Development (LA DOTD)
- **Designer:** Huval and Associates
- **Construction Manager at Risk (Pre-Construction):** Kiewit/Boh
- **Contract Type:** Construction Manager At-Risk (CMAR)
- **Construction Services Budget (GMP):** \$395 Million
- **Anticipated Start of Early Work Packages:** Q4 2022
- **DBE Goal:** 15% Construction



# Project Overview: Phase I of the I-10: LA 415 to Essen Lane on I-10 and I-12 – Segment 1 Limits



# LA DOTD Project Goals

- Successful collaboration, communication, and partnering between the CMAR Contractor, the Independent Cost Estimator (ICE), and the Design Professional throughout the Pre-Construction Services Phase;
- Innovative cost savings measures and construction methods that may be utilized to fund additional items of work;
- CMAR Contractor input during design review pertaining to constructability, means and methods, sequencing, temporary works, cost, and schedule to prepare for successful execution of the construction services of this Project;
- Minimized inconvenience to the traveling public during construction;
- Design and construction that minimize impacts to the surrounding property and business owners;
- Innovative means and methods of construction while remaining within the corridor established by the NEPA documents;
- Compliance with the Permits, Mitigations and Commitments outlined in the Environmental Assessment (EA); and
- Completion within the agreed budget and schedule.



# Project Delivery Method: Construction Manager At-Risk

## Construction Manager-at-Risk (CMAR)

The owner hires two firms:  
the designer and the  
construction manager (CM).

The CM acts as a consultant  
during design and as a general  
contractor during construction.



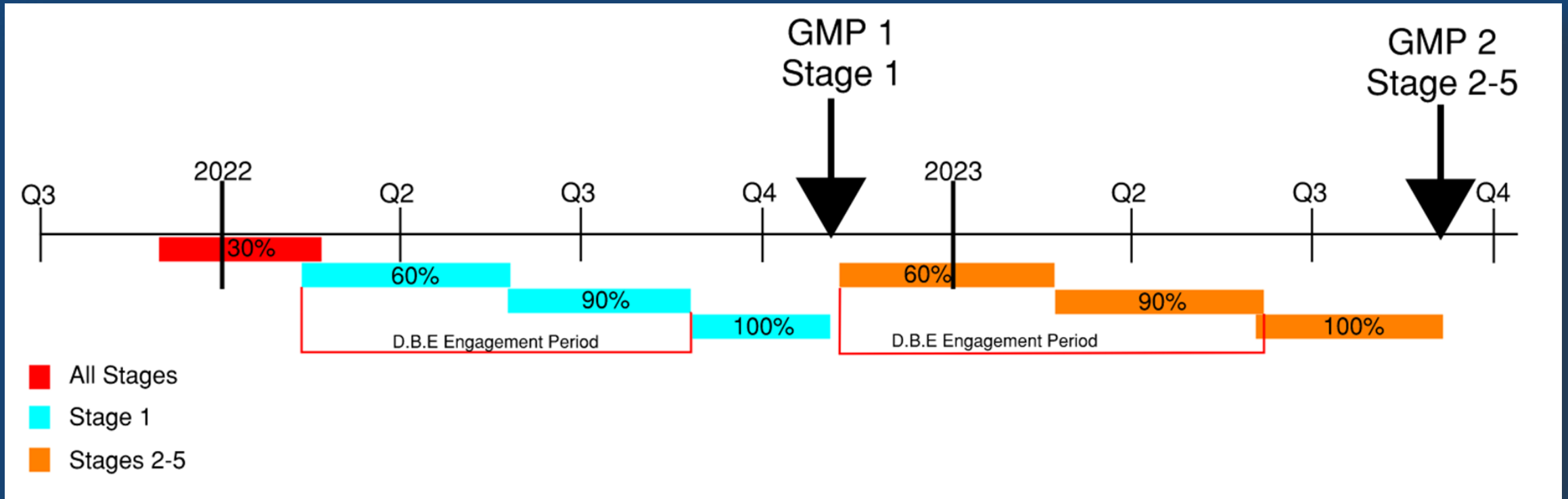
The CM provides constructability input, procures  
equipment and builds the project for a fixed price.

# Anticipated Schedule

---

- **November 2020:** LaDOTD Announcement of Selected CMAR Contractor
- **January 2021:** CMAR Pre-Construction Notice to Proceed
- **Q4 2021:** Huval & Assoc. 30% Design Deliverable
- **Q2 2022:** Huval & Assoc. 60% Design Deliverable
- **Q3 2022:** Huval & Assoc. 90% Design Deliverable
- **Q4 2022:** Huval & Assoc. 100% Design Deliverable
- **Q4 2022:** Construction Start

# Phase 1, Segment 1 Pre-Construction Services – Schedule





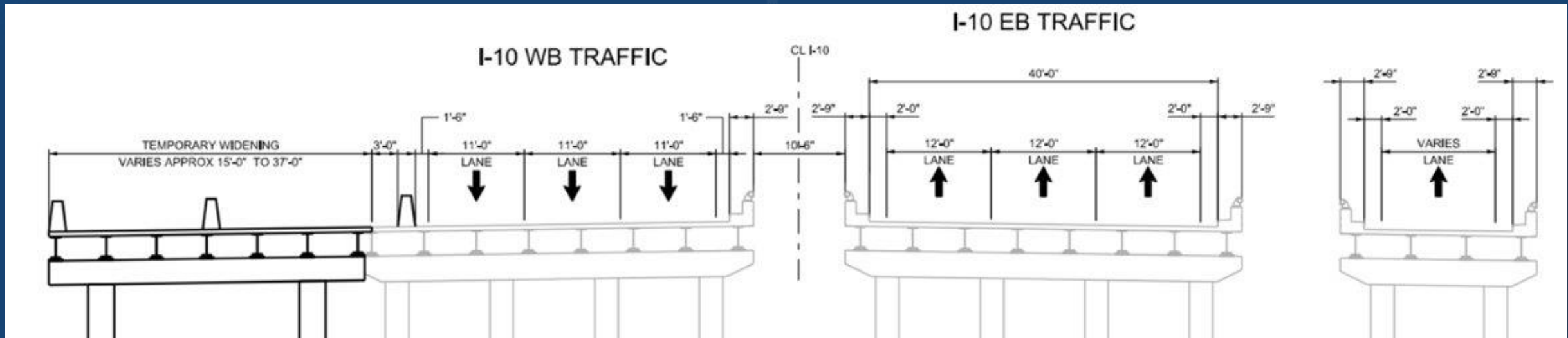
# Phase 1, Segment 1 Construction Services Schedule

Stages of Construction	2022				2023				2024				2025				2026				2027	
	Q1	Q2	Q3	Q4	Q1	Q2	Q3	Q4	Q1	Q2	Q3	Q4	Q1	Q2	Q3	Q4	Q1	Q2	Q3	Q4	Q1	Q2
Stage 1 - 9 Months																						
Stage 2 - 12 Months																						
Stage 3 - 9 Months																						
Stage 4 - 12 Months																						
Stage 5 - 6 Months																						

# Stages of Construction (Phase 1, Segment 1)

## Stage 1:

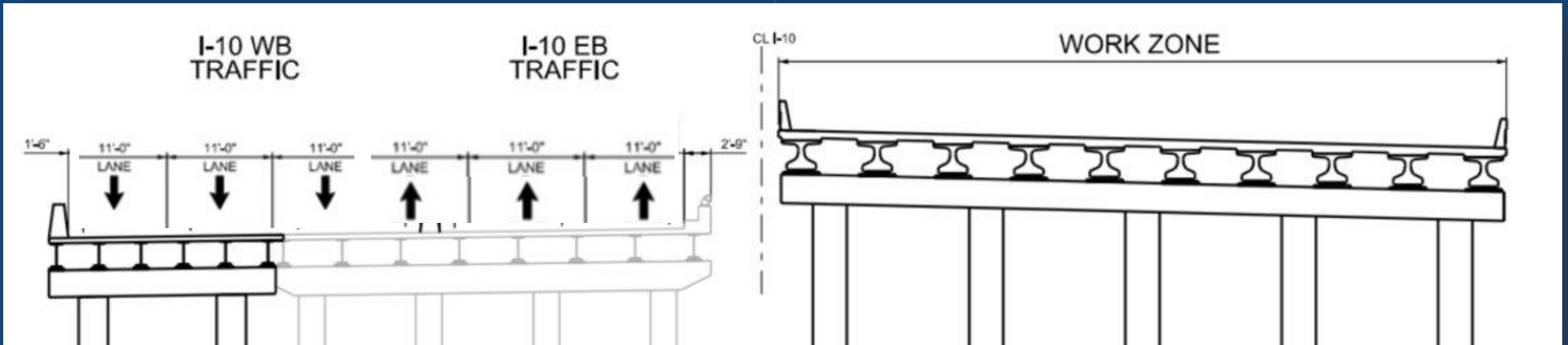
- Build temporary widening and crossovers in preparation to switch traffic in stage 2.
- Build the westbound widening of City Park Lake Bridge and at grade widening sections and retaining walls.



# Stages of Construction (Phase 1, Segment 1)

## Stage 2:

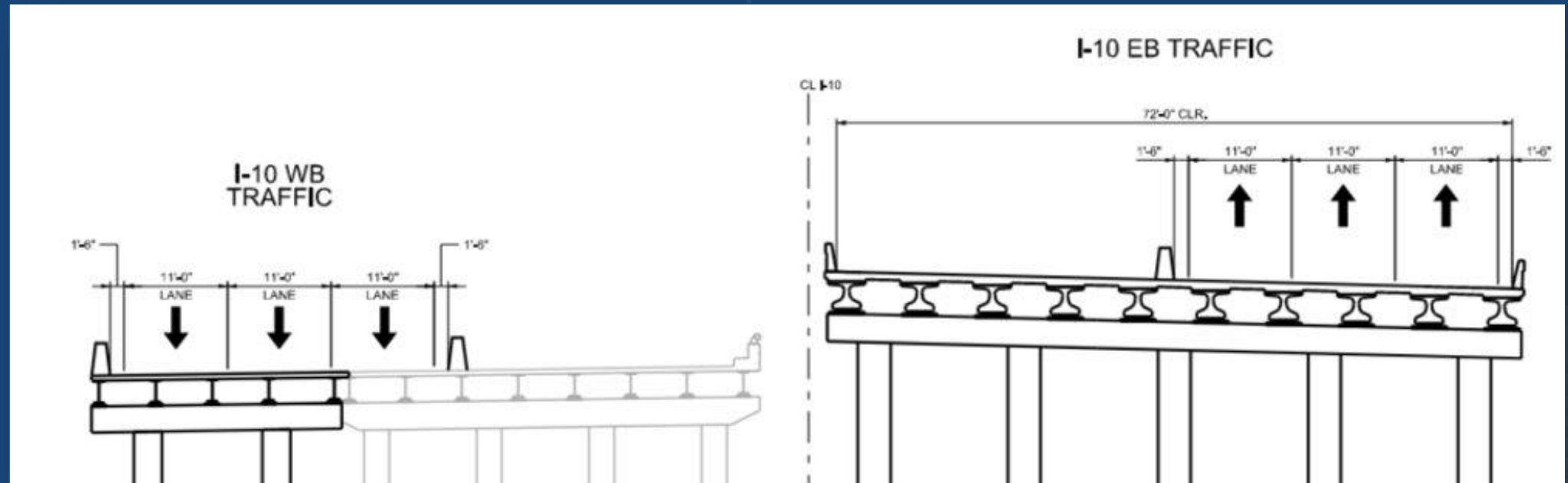
- Move traffic from the eastbound bridge to the westbound bridge.
- Remove and replace the eastbound bridge structures and mainline roadways.



# Stages of Construction (Phase 1, Segment 1)

## Stage 3:

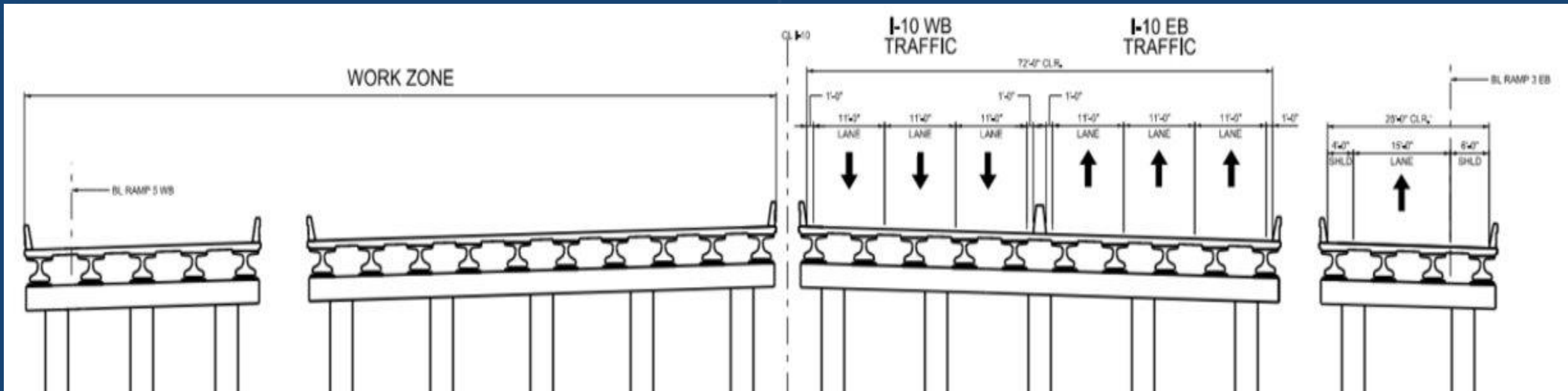
- Move traffic on to the westbound and eastbound bridges.
- Remove and replace the remaining eastbound bridge deck at Washington and City Park Lake



# Stages of Construction (Phase 1, Segment 1)

## Stage 4:

- Move traffic from the westbound bridge to the newly reconstructed eastbound bridge.
- Remove and replace the westbound bridge structures and mainline roadways.



# DBE Goals & Certification Requirements

---

Kiewit/Boh is committed to 15% construction DBE goals established by the LA DOTD for the Project.

- DBE firms must be certified by the Louisiana Unified Certification Program for participation to be counted toward established goals.
- For more information on the DBE certification process and requirements, visit: <http://www.dotd.la.gov/ucp/> or contact the LA DOTD DBE/SBE Program Manager at (225) 379-1762.

# Work with Us: Subcontractor/Supplier Opportunities\*

**Kiewit/Boh is seeking to engage firms interested in participating on the Project. Scopes of work include (but are not limited to):**

- Aggregate supply
- Buy/tie rebar
- Concrete barrier
- Concrete flatwork
- Concrete pumping
- Electrical & Illumination
- Erosion control
- Guardrail / fencing
- ITS systems
- Landscaping
- Manufacture and supply of concrete
- Painting/sandblasting
- Permanent signage
- Saw cutting
- Structures work –walls, bridges, etc.
- Supply of pipe and fittings
- Supply of precast structures
- Temporary & permanent striping
- Traffic control
- Trucking
- Utilities
- Welding

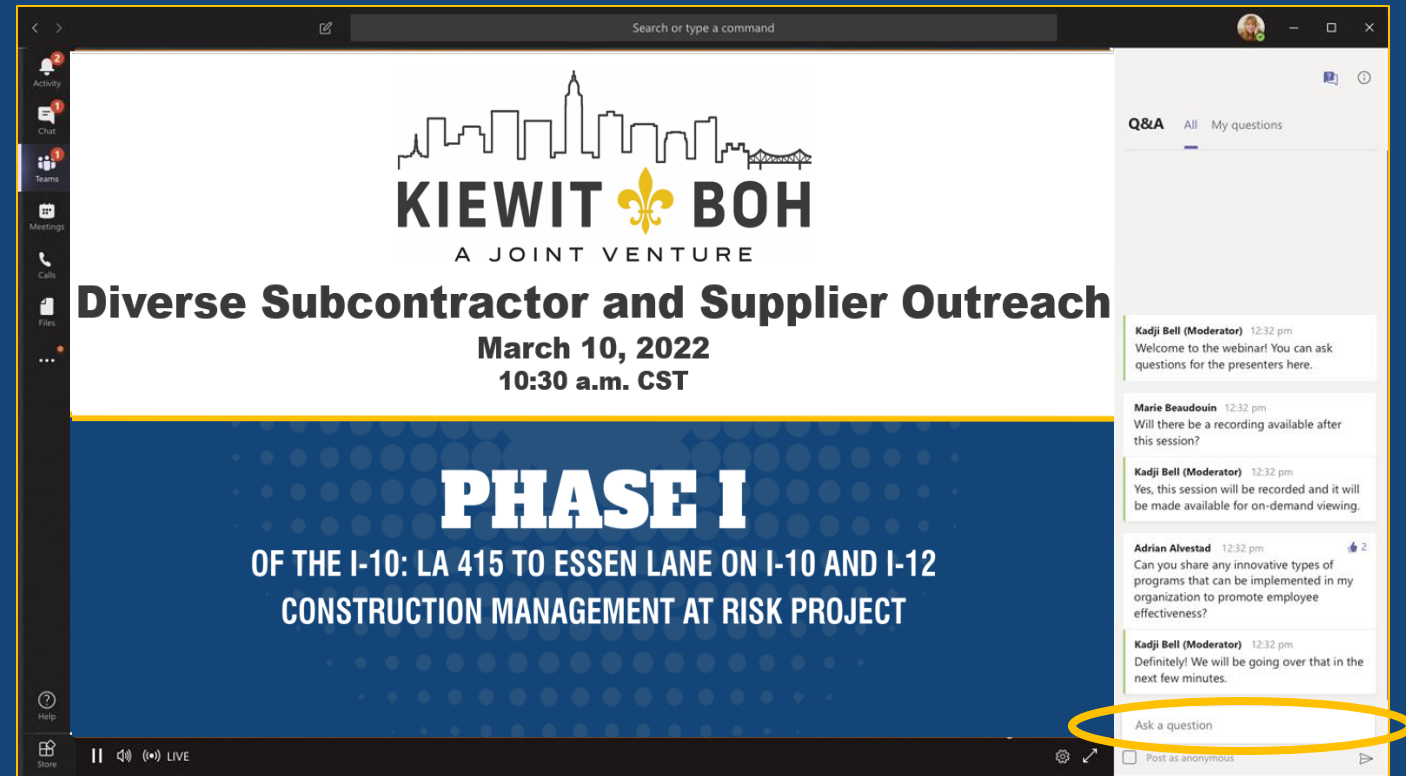
**Visit Our Website for a  
Detailed List of  
Anticipated Scopes**

***\*We also encourage participation by local, small, and diverse companies seeking to provide ancillary services, such as catering, printing, and office supplies.***

# Questions?

Please type your questions in the Q&A panel on the right.

*One of our moderators will direct to the appropriate presenter.*





# What does it take to work with us?

We evaluate companies on different criteria based on specific project requirements. This may include, but is not limited to:

- ✓ Safety performance
- ✓ Proven quality
- ✓ Certification
- ✓ Insurance and bonding capability
- ✓ On-time performance
- ✓ Years in business
- ✓ Reputation
- ✓ Past performance with JV team members or Client
- ✓ Value-added products or services

**Equity • Inclusion • Opportunity • Growth**

# Next Steps: Join our Database

## Step 1:

Complete our Subcontractor Questionnaire to join our mailing list and help us understand your capabilities and bidding interest for this project.

- ✓ Access the Questionnaire on our project website: <https://buildwithkbjv.com>
- ✓ Please indicate the scope(s) of work you are interested in bidding

The image displays two overlapping screenshots. The background screenshot is a web browser view of the 'Potential Contract Opportunities' page for the 'I-10: LA to Essen Lane on I-10 and I-12 Phase I' project. The page features the Kiewit/Boh logo, navigation links (Project Overview, Our Team, DBE Goals, Contract Opportunities, Events, Resources, Stay Connected), and a list of potential work scopes including Buy/tie rebar, Concrete barrier, Concrete flatwork, Concrete pumping, Electrical & illumination, Erosion Control, Guardrail, ITS systems, Landscaping, Painting/sandblasting, Permanent signage, and Saw cutting. The foreground screenshot is a 'Subcontractor Questionnaire' form. It includes fields for First Name, Last Name, Company Name, Email, Phone Number, Address, and Website / URL. It also has checkboxes for Type of Work (Professional Services, Construction, Vendor/Supplier), a text field for NAICS codes, a text field for Firm Description (Max 100 Words), a file upload area for a capability statement, and a dropdown for the number of employees.

**I-10: LA to Essen Lane on I-10 and I-12 Phase I**

Subcontractor Questionnaire

First Name \*

Last Name \*

Company Name \*

Email \*

Phone Number \*

Address \*

Website / URL \*

Type of Work: \*

☐ Professional Services ☐ Construction ☐ Vendor/Supplier

Please indicate the NAICS codes/services your company performs: \*

Firm Description (Max 100 Words): \*

Please attach capability statement, if available:

Drag and drop files here or [browse files](#)

How many employees does your organization have?

# Next Steps: Join Our Bidders' List

## Step 2:

After completing the Subcontractor Questionnaire, sign-up for an account in ***BuildingConnected!***

- Create an account with Building Connected  
<https://app.buildingconnected.com/create-account>
- Kiewit/Boh will notify firms of open solicitations/opportunities via direct email (to database), B2gNOW, BuildingConnected, our project website, and various local publications.
- Solicitation notices will include targeted scopes, qualifications sought, and submittal instructions

# QUESTIONS & ANSWERS

## PHASE I

OF THE I-10: LA 415 TO ESSEN LANE ON I-10 AND I-12  
CONSTRUCTION MANAGEMENT AT RISK PROJECT

# ASSISTANCE AND RESOURCES

## PHASE I

OF THE I-10: LA 415 TO ESSEN LANE ON I-10 AND I-12  
CONSTRUCTION MANAGEMENT AT RISK PROJECT

# We're Building More Than Roads

Kiewit/Boh will maximize opportunities for DBE firms through:

- Dividing work into economically feasible packages to assist diverse-owned businesses and ensure equitable and meaningful participation
- Fostering the development and growth of existing and potential diverse business partners
- Partnership with local community/industry organizations to promote opportunities and align resources
- Informational events to provide updates and promote opportunities
- Timely notification of bid opportunities
- Dedicated resources to address information/assistance needs

**Equity • Inclusion • Opportunity • Growth**

# Resources and Assistance

Kiewit/Boh is committed to providing information and resources to assist firms seeking opportunities to participate on the Project.

- “Roadside Assistance” Workshop Series
- Bidders’ Quick Reference Guide
- Project Website

The collage features several key documents and website sections:

- Resources Page:** A header with the Kiewit/Boh logo and navigation links (Project Overview, Our Team, DBE Goals, Contract Opportunities, Events, Resources, Stay Connected). Below is a large 'Resources' title over a city skyline graphic.
- Organizations / Resources / Disadvantaged Business Enterprises:** A section stating Kiewit/Boh's commitment to providing resources and listing federal partners: U.S. Department of Commerce, Minority Business Development Council; U.S. Department of Transportation; and U.S. Department of Homeland Security.
- PHASE I OF THE I-10:** A section for the 'LA 415 TO ESSEN LANE ON I-10 AND I-12 CONSTRUCTION MANAGEMENT AT RISK PROJECT'. It includes the Kiewit/Boh logo and a 'BIDDER'S QUICK REFERENCE GUIDE - NEXT STEPS AND RESOURCES' header.
- JOIN OUR DATABASE!:** A section encouraging firms to complete a Subcontractor Questionnaire and create an account with BuildingConnected at [buildingconnected.com](http://buildingconnected.com).
- STAY INFORMED!:** A section stating Kiewit/Boh's commitment to keeping firms informed and providing project information.
- GOAL AND CERTIFICATION INFORMATION:** A section detailing the 7% pre-construction and 15% construction DBE goals established by the LA DOTD, and the requirement for firms to be certified by the Louisiana Unified Certification Program.
- CONNECT WITH US!:** A section providing contact information: Email: [I-10CMAROutreach@Kiewit.com](mailto:I-10CMAROutreach@Kiewit.com) and Visit: [www.buildwithKiewit-Boh.com](http://www.buildwithKiewit-Boh.com).
- QUESTIONS?:** A section with the same contact information as above.
- ORGANIZATIONS AND RESOURCES FOR SMALL, LOCAL AND DISADVANTAGED BUSINESS ENTERPRISES:** A yellow box listing various organizations such as the Louisiana Chamber of Commerce, American Chamber of Commerce, and others.
- ROADSIDE ASSISTANCE:** A photograph of a multi-lane highway with several vehicles, including a large white truck.

**Equity • Inclusion • Opportunity • Growth**



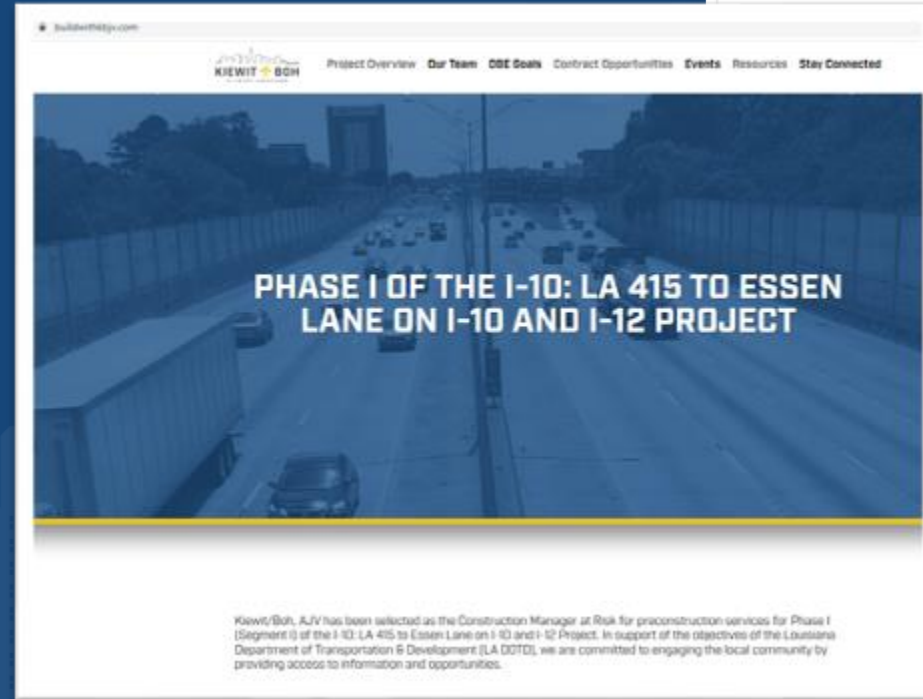
# Project Website


- Project Information
- Contract Opportunities
- Subcontractor/Database sign-up
- Events Calendar
- Resource List
- Virtual Technical Assistance Hub

[www.buildwithkbjv.com](http://www.buildwithkbjv.com)



**Equity • Inclusion • Opportunity • Growth**



  
**I-10: LA to Essen Lane on I-10 and I-12  
Phase I**

Subcontractor Questionnaire

First Name \*

Last Name \*

Company Name \*

☐ Vendor/Supplier

or company performs: \*

here or [browse files](#)

have?



# Virtual Technical Assistance Hub

**COMING SOON!**

Online assistance hub featuring key business topics from a variety of resources:

- Website links
- Articles
- On demand workshops



**Equity • Inclusion • Opportunity • Growth**

# Technical Assistance Workshops

---

Kiewit /Boh is hosting the “Roadside Assistance” Workshop Series to provide resources, information, and support to local, small, and diverse businesses seeking opportunities on the I-10 CMAR Project.

Scheduled topics include:

- Certification Requirements and Process
- Navigating Building Connected Bid Platform
- Work Safe: Best Practices For Elevating Your Safety Program
- Quality Management: Best Practices for Delivering Error-Free Work

*Stay tuned for workshop schedule and details!*

**Equity • Inclusion • Opportunity • Growth**

# RESOURCE PARTNER PRESENTATION:

## Louisiana Chamber of Commerce Foundation, Inc.



**Ms. Kelisha Garrett, MBA**  
**Vice-President & C.O.O.**  
**Governmental Affairs**

### PHASE I

OF THE I-10: LA 415 TO ESSEN LANE ON I-10 AND I-12  
CONSTRUCTION MANAGEMENT AT RISK PROJECT



# Louisiana Chamber Of Commerce Foundation Inc.

# LOUISIANA CHAMBER OF COMMERCE FOUNDATION



Mission to Build



## LCCF the Organization

Established in 2018



## Team

Meet the Team



## Programs and Services

CCGI Program

BIP



## The Need

Supporting Black-owned businesses will provide meaningful growth for the entire economy



# LOUISIANA CHAMBER OF COMMERCE TEAM

## Board & Staff



**David St. Etienne**

President/CEO



**Kelisha Garrett, MBA**

Vice-President & C.O.O.  
Governmental Affairs



**Kawana Davis, MSM**

Director of Programming  
& Operational Affairs



LCCF is led by **President & CEO David St. Etienne**. David has over 30 years of experience as the owner of a local Information Technology business that provides professional services nationwide and serves as the Vice-Chair for the Louisiana Workforce Investment Council, board member of the Jefferson Parish Workforce Development Board, and prior board chairman for the New Orleans Regional Black Chamber of Commerce.





**Kelisha Garrett, MBA**, serves as the organization's Vice President for Operations and Governmental Relations. Kelisha has over 20 years in business operations, management, executive leadership, regulatory compliance, policy creation, and training. She has owned small businesses in pharmaceutical research, business development, real estate acquisition, financial management, regulatory compliance, diversity & inclusion, community engagement and training. She is the former Executive Director for the New Orleans Regional Black Chamber of Commerce where she redefined the organization's supportive service structure and assisted 250+ businesses.





Kelisha and David are supported by **Kawana Davis, MSM**, who has served as the organization's Director of Programming & Operational Affairs since 2019. She has owned multiple businesses focused on pet apparel and personal financial planning and spent more than a decade working in the health care and construction industries.



## ❖ **Organizational Background**

The Louisiana Chamber of Commerce Foundation is a non-profit 501(c)3 organization headquartered in New Orleans, Louisiana. Established in 2018 to launch, coordinate, and develop minority chambers of commerce across Louisiana, the mission of LCCF is to help drive the economic growth of Louisiana by empowering and sustaining the minority business community through the development of local chambers.

This mission is achieved through public and private sector engagement to help provide access to procurement opportunities, capacity development through technical assistance for minority businesses and chambers of commerce, and advocacy for minority business growth and development at the local, state, and national levels.

LCCF currently works with eight chambers of commerce across Louisiana, and supports these chambers through its membership with the U.S. Black Chambers, Inc. In total, LCCF currently represents 900 business members of minority chambers of commerce and 95,000+ African-American-owned businesses across Louisiana with 121,500+ employees.



# Programs & Services



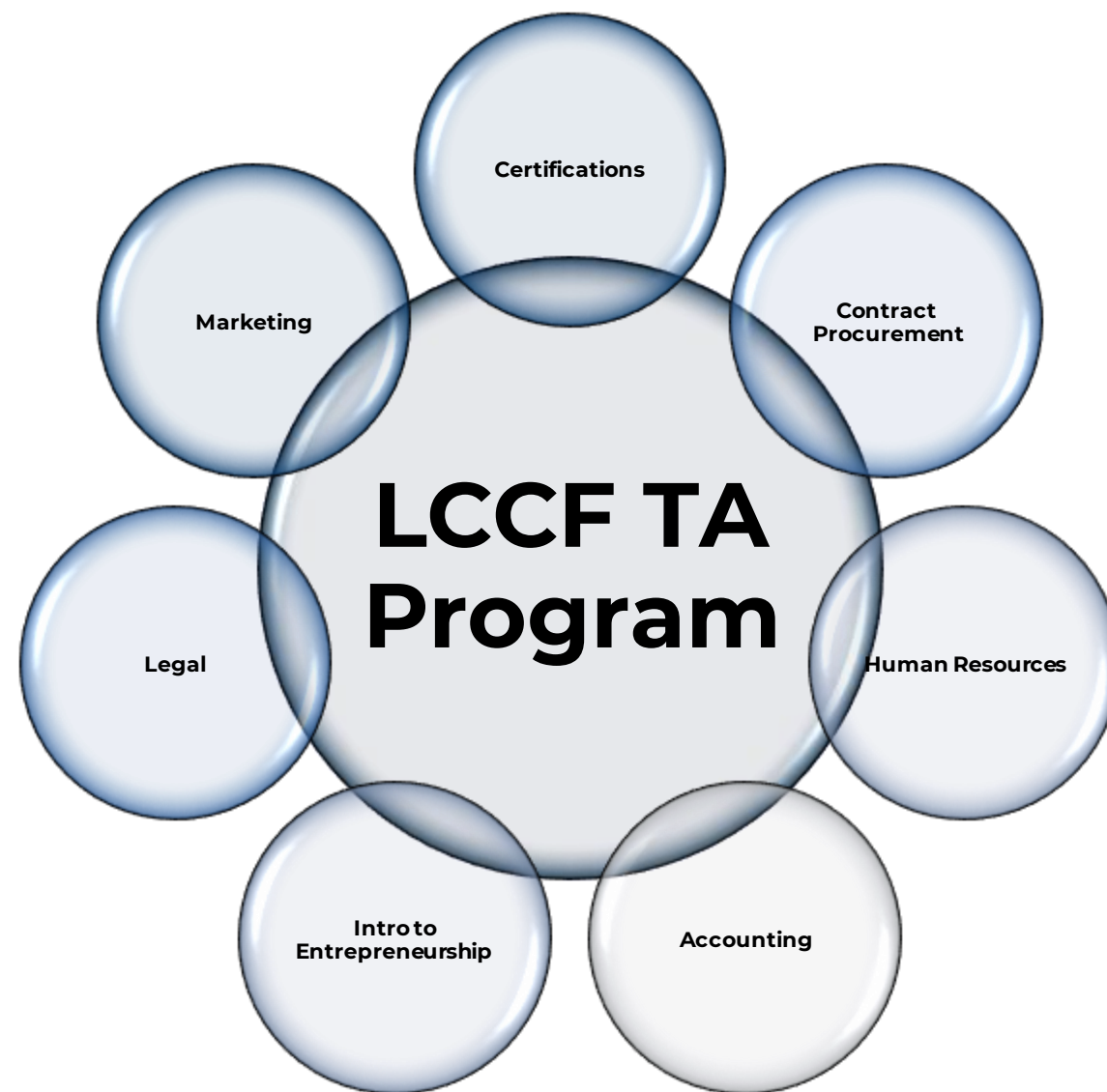
Currently, LCCF supports minority chambers and statewide economic development through its **Chamber of Commerce Growth Initiatives (CCGI) program**. The CCGI program provides:

- Technical assistance for the creation and development of minority business chambers of commerce;
- Expertise and access to statewide resources that leverage opportunities for minority-owned businesses; assistance with the formulation of new businesses;
- Opportunities to facilitate the growth and expansion of existing businesses;
- Introductions that foster organic business and community relationships statewide;
- Pathways to impact and expansion of indigenous industries through small business development; and
- Aggregation and analysis of data that fosters business growth.

In addition to the CCGI program, LCCF provides supportive services to each of its affiliate chambers. These services include a comprehensive review of each affiliate's organizational structure, board representation, membership make-up, programming, and community support. Based on each affiliate's organizational needs, LCCF provides individual and tailored comprehensive training, information, technical and organizational assistance, and member retention drives.



LCCF also recently launched its **Business Innovation Program (BIP)** to promote the involvement of minority owned businesses in domestic and international trade. The BIP program ensures these organizations have the skills, capacity, relationships and knowledge to increase financing, contract opportunities, and provide for greater access to new domestic and global markets.

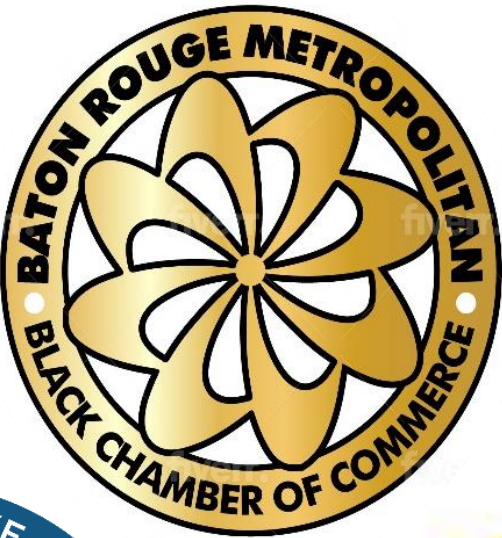




# ORGANIZATIONS WE PARTNER WITH



# LCCF AFFILIATE CHAMBERS



# RESOURCE PARTNER PRESENTATION:

## SJB GROUP



**Mr. Kenyatta Sparks**  
**Program Manager**

### PHASE I

OF THE I-10: LA 415 TO ESSEN LANE ON I-10 AND I-12  
CONSTRUCTION MANAGEMENT AT RISK PROJECT



## ***SJB DBE SUPPORTIVE SERVICES***

**PRESENTED BY:  
SJB DBE SUPPORTIVE SERVICES REGION A  
CONSULTANT FOR LADOTD**



**SJB**  **GROUP, LLC**

# SJB GROUP DBE SUPPORTIVE SERVICES

---

## SJB DBE Supportive Services Team

Region A: Baton Rouge, Lake Charles, Alexandria, Lafayette, Shreveport, Monroe

### **SJB DBE Supportive Services:**

Ms. Jackie des Bordes, President | Construction Services Program Manager

Ms. Grace Chatman, Communication Specialist

Mr. Kenyatta Sparks, Program Manager

Mr. Daryl Ivy, Training Manager

### **Solid Ground Innovations:**

Ms. Sevetri Wilson, Webinar Training Oversight Manager

### **Little Dog Marketing:**

Ms. Meghan Montgomery, Digital Marketing Consultant



# SJB GROUP DBE SUPPORTIVE SERVICES

---

## SJB GROUP CAN ASSIST DBES IN THE FOLLOWING AREAS:

- **BY PREPARING** COMPANY BUSINESS CARDS, PROFILE SHEETS, AND PROVIDING INFORMATION ON RECOMMENDED TARGET AREAS FOR YOUR MARKETING EFFORTS.
- **BY ACTING** AS A LIAISON BETWEEN THE DBE CONTRACTOR AND PRIME CONTRACTOR FOR PROJECT INFORMATION AND IN PROBLEMS OCCURRING ON THE JOBSITE.
- **BY INFORMING** YOU OF UPCOMING LA DOTD LETTINGS, AND PROJECT INFORMATION FOR OTHER AGENCIES THROUGHOUT THE STATE. SJB CAN ASSIST YOU IN LOCATION BID TABULATION INFORMATION AS WELL.
- **BY PROVIDING** GUIDANCE ON MATERIAL TAKEOFFS, BID PREPARATION AND ESTIMATING, PROJECT SCHEDULING, AND PLANNING FOR PROJECTS THAT DBES ARE BIDDING OR PLAN TO BID IN THE NEAR FUTURE.
- **BY HELPING** WITH OFFICE COMPUTER OPERATIONS TO INCLUDE TROUBLE-SHOOTING PROBLEMS, INTERNET ACCESS AND SOFTWARE INSTALLATION, AND BASIC TO TECHNICAL COMPUTER TRAINING.
- **BY ASSISTING** IN FINANCIAL AREAS SUCH AS LOAN AND BOND PACKAGE PREPARATIONS, COMPANY FINANCIAL STATEMENTS, BUSINESS PLAN PREPARATION AND SBA 8(A) AND HUB-ZONE CERTIFICATION PACKAGES.

# SJB GROUP DBE SUPPORTIVE SERVICES

---

## ONE-ON-ONE CONSULTANT VIRTUAL MEETINGS

OUR GOAL IS TO PROVIDE YOU WITH THE TOOLS AND RESOURCES NEEDED TO HELP YOU GROW AND SUSTAIN YOUR BUSINESS. TO ASSIST US IN DETERMINING THE AREAS THAT NEED IMMEDIATE ATTENTION WE OFFER ONE-ON-ONE VIRTUAL MEETINGS/TRAININGS EVERY MONDAY, WEDNESDAY, AND THURSDAY OF EACH WEEK TO CONDUCT A “NEEDS ASSESSMENT”.

**WE WELCOME YOUR ATTENDANCE, SO PLEASE FEEL FREE TO CONTACT US IN ADVANCE TO RSVP.**

# SJB GROUP DBE SUPPORTIVE SERVICES

---

## CONTACT INFORMATION

SJB DBE Supportive Services

Region A: Baton Rouge, Lake Charles, Alexandria, Lafayette, Shreveport, Monroe

Mr. Kenyatta Sparks, SJB DBE Supportive Services, Program Manager

Phone: 225-706-5756

Email: [Kenyatta.Sparks@SJBGroup.com](mailto:Kenyatta.Sparks@SJBGroup.com)

SJB DBE Supportive Services Website: [www.louisianadb.com](http://www.louisianadb.com)

Social Media Platforms: Facebook  , LinkedIn  , and Twitter 

❖ Social Media Handle (All Three Platforms): **@SJBDBELouisiana**

# QUESTIONS & ANSWERS

## PHASE I

OF THE I-10: LA 415 TO ESSEN LANE ON I-10 AND I-12  
CONSTRUCTION MANAGEMENT AT RISK PROJECT

# Stay Tuned for Future Events

Kiewit/Boh is seeking opportunities to engage with local, small, and diverse companies interested in performing work on the Project.

Stay tuned! Information on future events will be shared via email, B2gNOW, and our project website.







# **Diverse Subcontractor and Supplier Outreach**

## **PHASE I**

**OF THE I-10: LA 415 TO ESSEN LANE ON I-10 AND I-12  
CONSTRUCTION MANAGEMENT AT RISK PROJECT**

***Thank you for joining us!***

# Get Connected. Stay Connected.



**Email:**

**I-10CMAROutreach@kiewit.com**



**Website:**

**www.buildwithkbjv.com**

**AIM YOUR SMART PHONE  
CAMERA HERE  
TO ADD US TO YOUR  
CONTACTS.**

