



# **Diverse Subcontractor and Supplier Outreach**

**June 7, 2022**

**10:30 a.m. CDT**

## **PHASE I**

**OF THE I-10: LA 415 TO ESSEN LANE ON I-10 AND I-12  
CONSTRUCTION MANAGEMENT AT RISK PROJECT**

***The presentation will begin shortly. Please “sign in” by typing your name and company in the Q&A panel at the right side of the screen.***



# **Diverse Subcontractor and Supplier Outreach**

**June 7, 2022**

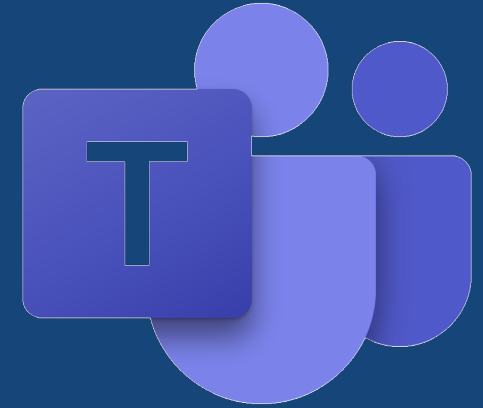
**10:30 a.m. CDT**

## **PHASE I**

**OF THE I-10: LA 415 TO ESSEN LANE ON I-10 AND I-12  
CONSTRUCTION MANAGEMENT AT RISK PROJECT**

# Microsoft Teams LIVE – Quick Tips

- All attendees are MUTED and are invited to participate by typing in the Q&A throughout the event.
- To ask a question, select Q&A chat on the right side of screen, type your question, and click send.
- If you experience technical difficulties, please exit event and reenter.
- Attendees may experience a slight delay during slide transitions.



***This event is being recorded.***

# Agenda

---

- Welcome Remarks
- Kiewit/Boh Team Introduction
- CMAR Process Overview
- Project Overview
- EWP 2 Scope & Opportunities
- EWP 3 Scope & Opportunities
- Next Steps
- Questions & Answers
- Closing Remarks

# We're Building More than Roads

---

## **Kiewit/Boh maximizes opportunities for small and diverse businesses through:**

- Dividing work into economically feasible packages to assist diverse-owned businesses and ensure equitable and meaningful participation
- Actively seeking out diverse businesses that will bring additional value to our projects
- Building upon new and existing subcontractor relationships to foster long-term partnerships
- Fostering the development and growth of existing and potential diverse business partners
- Partnering with community and industry organizations focused on supporting small and diverse businesses

# Kiewit/Boh Team Member Introductions

---

- Kelli Kelly – Economic Inclusion Lead
- Harry Koenigs – Pre-Construction Manager
- Erich Jones – Structures Manager
- Hugh Harrison – DBE Manager
- Nick Fleming – DBE Outreach and Engagement
- Britt Walter – Supplier Diversity Manager
- Aaron Willey – Roadway Manager

# What is CMAR?

- Construction Manager At Risk as defined by LADOTD:

*“CMAR is a delivery method by which the LA DOTD uses a design professional, that is engaged by the LA DOTD for professional predesign or design services, or both. The LA DOTD contracts separately with a CMAR Contractor to engage in the Preconstruction Phase. The same CMAR Contractor may also provide construction services for the project.”*

- The LADOTD also employs an Independent Cost Estimator (ICE) to verify estimates from CMAR contractor.
- The process allows for the 3 entities to work together to determine the most efficient design from both a constructability and utilization perspective. We, as the CMAR contractor, provide input for ways to save cost and make the work more constructable.



# Construction Manager At-Risk Defined

## Construction Manager-at-Risk (CMAR)

The owner hires two firms:  
the designer and the  
construction manager (CM).

The CM acts as a consultant  
during design and as a general  
contractor during construction.

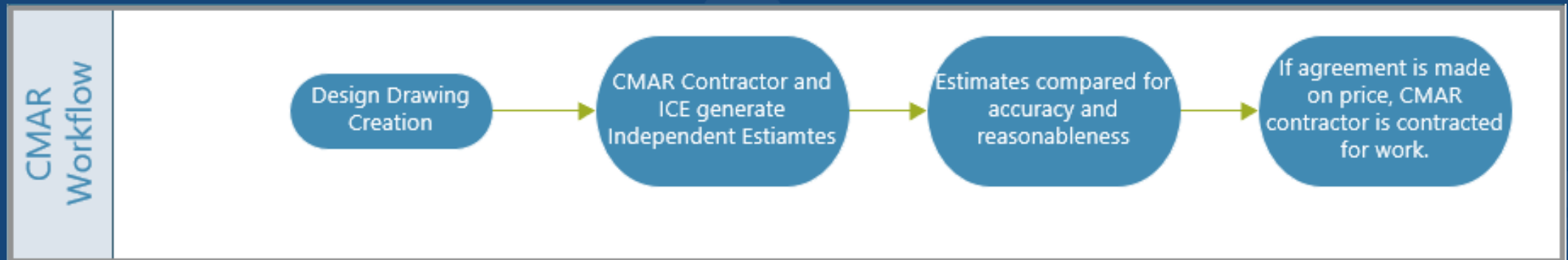


The CM provides constructability input, procures  
equipment and builds the project for a fixed price.



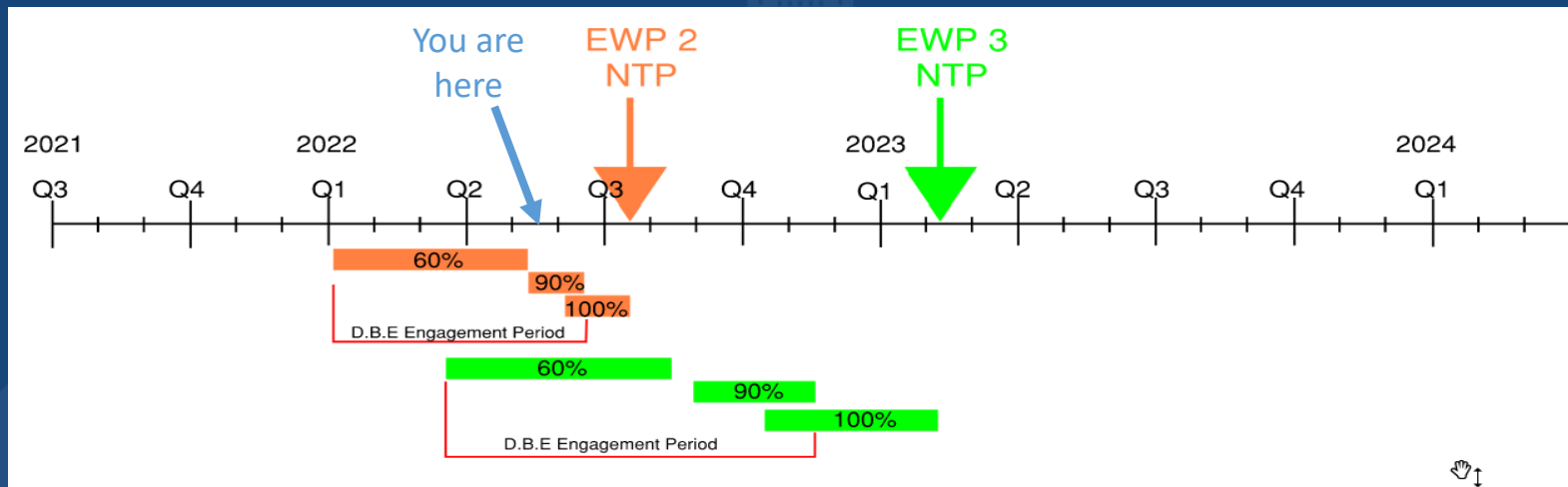
# CMAR Process Details

- The CMAR process allows for multiple iterations of design and cost estimating.
  - The design team produces 30%, 60%, 90% and 100% drawings for the project
    - Can be broken down to smaller packages of the whole (i.e stages or defined pieces of work)
  - The CMAR Contractor will provide cost estimates at each stage of design to submit to Owner.
    - These estimates are compared in detail with ICE to confirm pricing is reasonable.



# CMAR Process for Subcontractors

- 60% Package Estimates – Subcontractors review bid packages that they are interested in and provide pricing for review & budgetary purposes.
  - Recommend how packages may better fit your business (i.e package size, combining multiple packages, etc)
- 90% Package Bids – Subcontractor provide hard bids used to select contractors in most cases.
  - Between 90% and 100% we will work with chosen subcontractors on any adjustments, etc. and finalize contracting.



# Anticipated Schedule

## EWP 2

- **90% Design**
  - Subcontractor RFQ: 6/3/2022
  - Bids Due: 6/17/2022
  - Selection of vendor Late July
- **100% Design**
  - Subcontract Negotiation: Early August

## EWP 3

- 60% Design – June 2022
- 90% Design – September 2022
- 100% Design- Q4 2022
- Construction Start: Q1 2023

## EWP 4

- 60% Design – July 2023
- 90% Design – September 2023
- 100% Design- October 2023
- Construction Start: January 2024

## EWP 5

- 60% Design – April 2023
- 90% Design – October 2023
- 100% Design- January 2024
- Construction Start: Q1 2024

# Project Overview: I-10: LA 415 to Essen Lane on I-10 and I-12

## Project Description:

The I-10: LA 415 to Essen Lane on I-10 and I-12 CMAR Project is the largest urban interstate reconstruction project in history of the Louisiana Department of Transportation.

The project consists of widening and reconstruction of the I-10 east and westbound lanes from three lanes to four lanes. The major improvements include bridge replacement and rehabilitation, interchange and ramp modifications, shoulder widening, and auxiliary lane(s).

<https://i10br.com/project-info/>

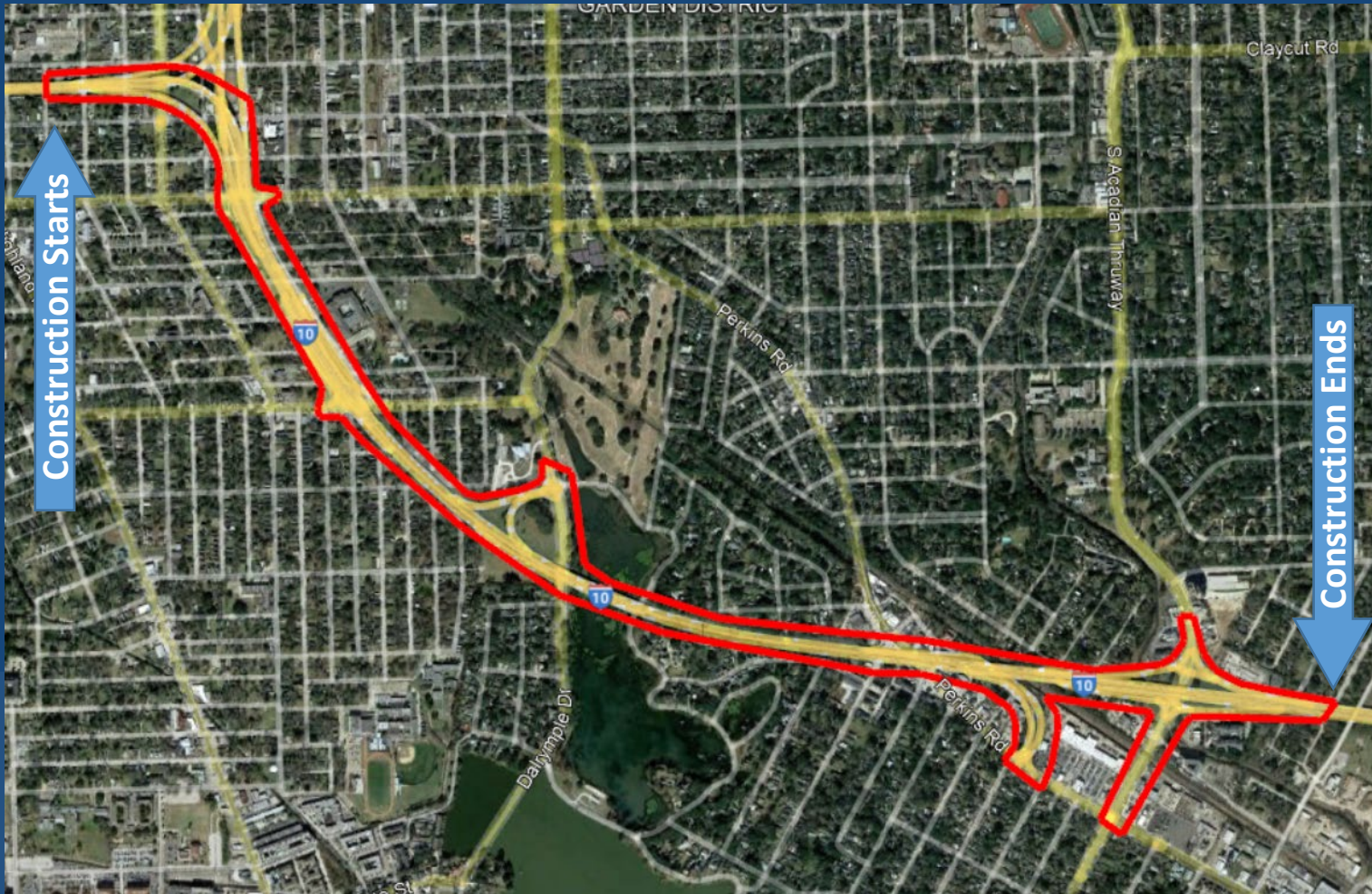
## Project Phases:

- **Phase I :** The limits of Phase 1 extend from the Mississippi River Bridge to Essen Lane on I-10.
- **Phase II:** The limits of Phase 2 extend from LA 415 to the Mississippi River Bridge.
- Phases are organized into Segments

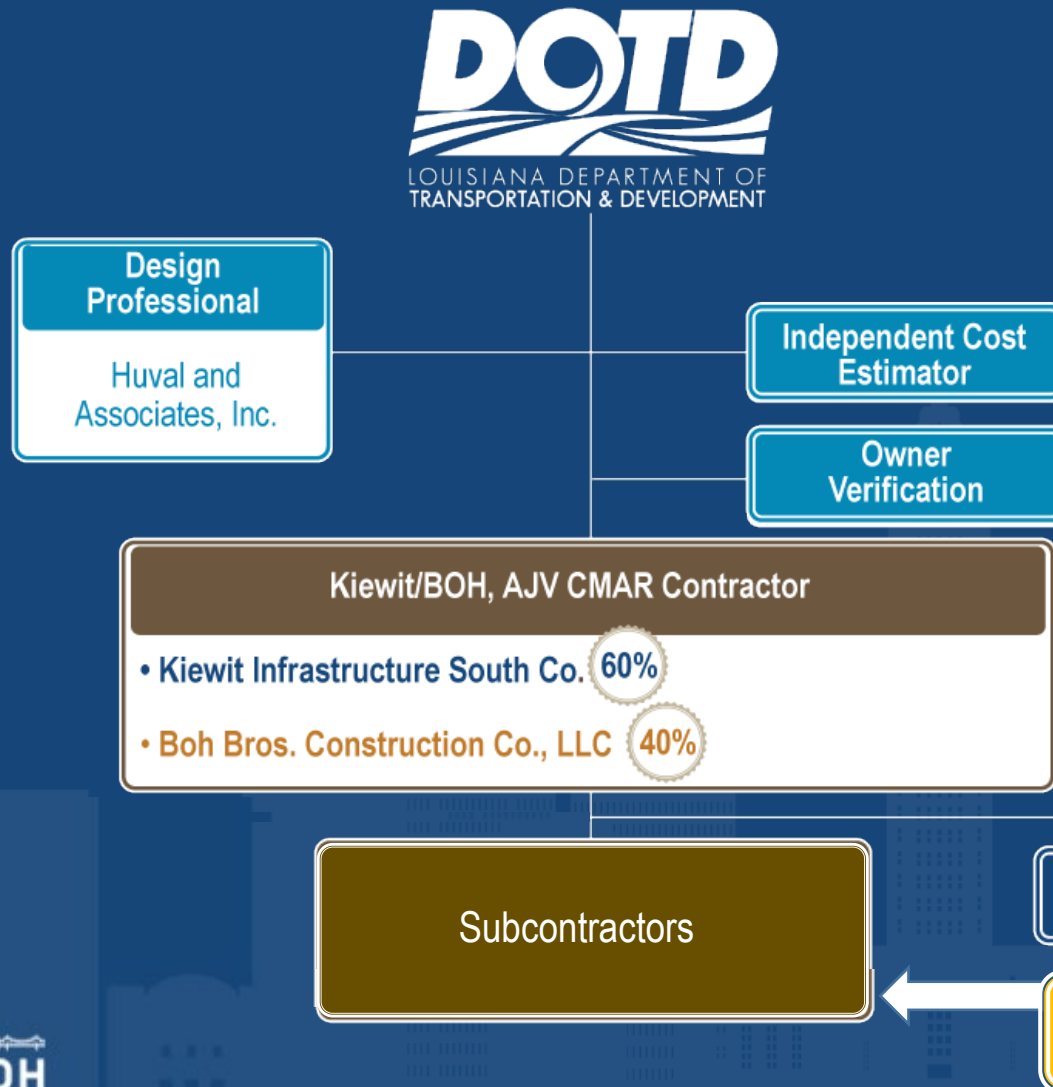
**Kiewit and Boh Bros. Construction, A Joint Venture (Kiewit/Boh) is currently under contract as the Construction Manager at Risk for preconstruction services for Phase 1 (Segment 1).**



# Project Overview: Phase I of the I-10: LA 415 to Essen Lane on I-10 and I-12 – Segment 1 Limits



# Phase I (Segment 1) Project Organization



# Phase 1, Segment 1 Construction Services Schedule

Stages Of Construction	2023				2024				2025				2026				2027				2028			
	Q1	Q2	Q3	Q4	Q1	Q2	Q3	Q4	Q1	Q2	Q3	Q4	Q1	Q2	Q3	Q4	Q1	Q2	Q3	Q4	Q1	Q2	Q3	Q4
Stage 1 = 8 Months	■	■	■	■	■																			
Stage 2 = 12 Months						■	■	■	■	■	■	■	■											
Stage 3 = 10 Months									■	■	■	■	■	■	■									
Stage 4 = 23 Months													■	■	■	■	■	■	■	■	■	■	■	■
Stage 5 = 3 Months																					■	■		

\* Durations are subject to change based on design and sequencing



# DBE Goals & Certification Requirements

---

Kiewit/Boh is committed to 15% construction DBE goals established by the LA DOTD for the Project.

- DBE firms must be certified by the Louisiana Unified Certification Program for participation to be counted toward established goals.
- For more information on the DBE certification process and requirements, visit: **<http://www8.dotd.la.gov/ucp/>** or contact the **LA DOTD DBE/SBE Program Manager at (225) 379-1762.**

# EWP 2 Subcontractor/Supplier Opportunities\*

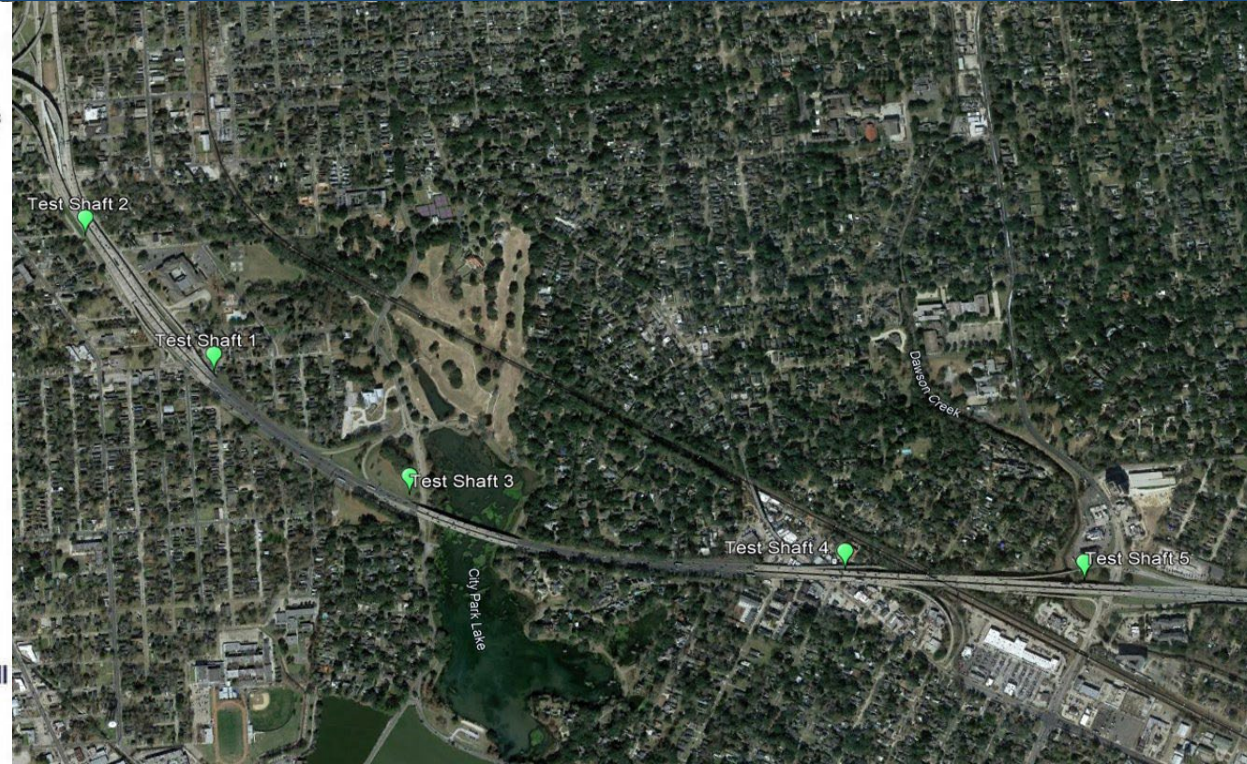
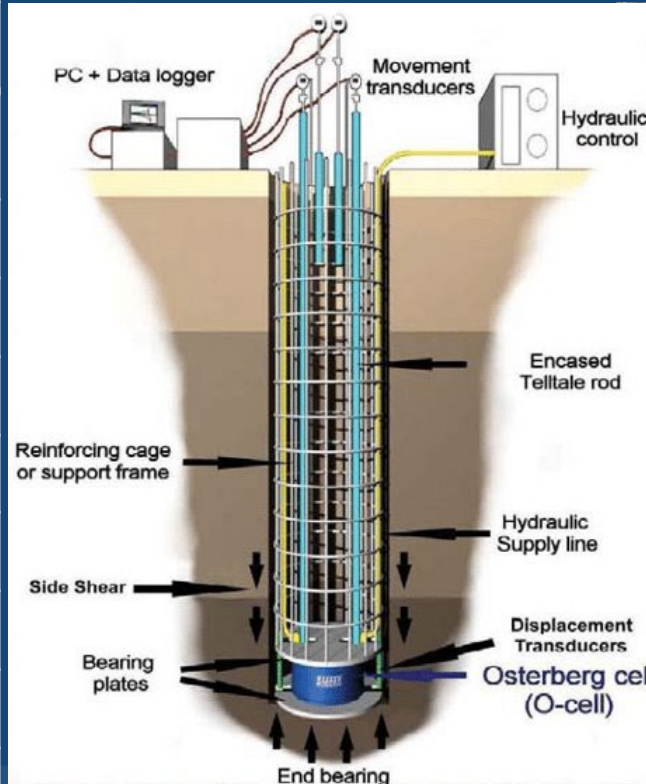
## EWP 2 Subcontractor Scopes of work include (but are not limited to):

- Chemical Toilets
- Clear & Grub
- Cross Hole Sonic Load Test
- Drilled Shaft (Test Shaft)
- Dynamic Monitoring Assistance
- Erosion Control
- Fencing
- ITS
- Load Cell Test
- MOT
- Noise Monitoring
- Office - Building Inspection
- Office – Build-Out
- Office – IT Setup
- Office – Janitorial
- Office - Mowing
- Office - Plumbing
- Pre-Construction Survey - Line & Grade
- Pre-Construction Survey - Photo & Video
- Project Security
- Quality Control Testing
- Queue Detection
- Static Load Test
- Street Sweeping
- Thermal Integrity Profiling
- Trucking
- Vibration Monitoring
- Yard Set-Up - Asphalt Paving
- Yard Set-Up - Dry Utilities
- Yard Set-Up - Grading/Aggregate
- Yard Set-Up - Pavement Marking

*\*We also encourage participation by local, small, and diverse companies seeking to provide ancillary services, such as catering, printing, and office supplies.*

# EWP 2 Scope: Test Shafts & Testing

Scope Description	EA
TEST SHAFT (36" DIAMETER)	1.00
TEST SHAFT (42" DIAMETER)	4.00
BI-DIRECTIONAL LOAD CELL TEST (36" DIAM)	1.00
BI-DIRECTIONAL LOAD CELL TEST (42" DIAM)	4.00
CROSSHOLE SONIC LOG TEST (36" DIAMETER)	1.00
CROSSHOLE SONIC LOG TEST (42" DIAMETER)	4.00
PERMANENT CASING (36" DIAMETER)	1.00
PERMANENT CASING (42" DIAMETER)	2.00
THERMAL INTRGRITY PROFILING (36" DIAM)	1.00
THERMAL INTRGRITY PROFILING (42" DIAM)	4.00



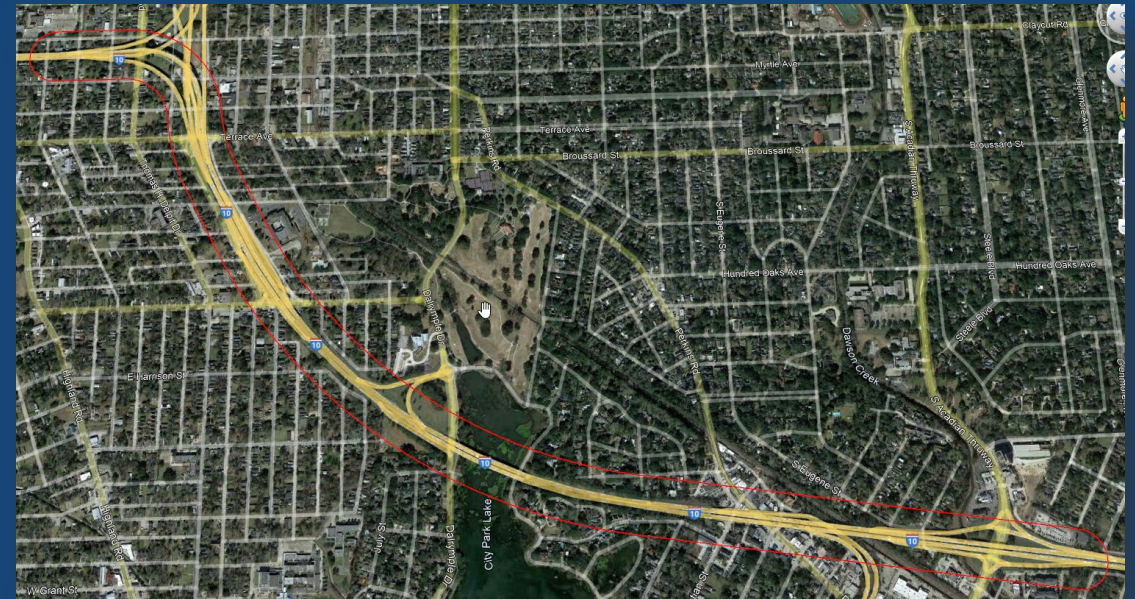


# EWP 2 Scope: Pre-Construction Survey and Quality Control

## Pre-Construction Survey Scope:

Provide video and photo content of mainline, side streets, and structures along the corridor both for pre- and post-construction conditions. Current limits would include all structures and roadway within 300' of Center line of Interstate 10

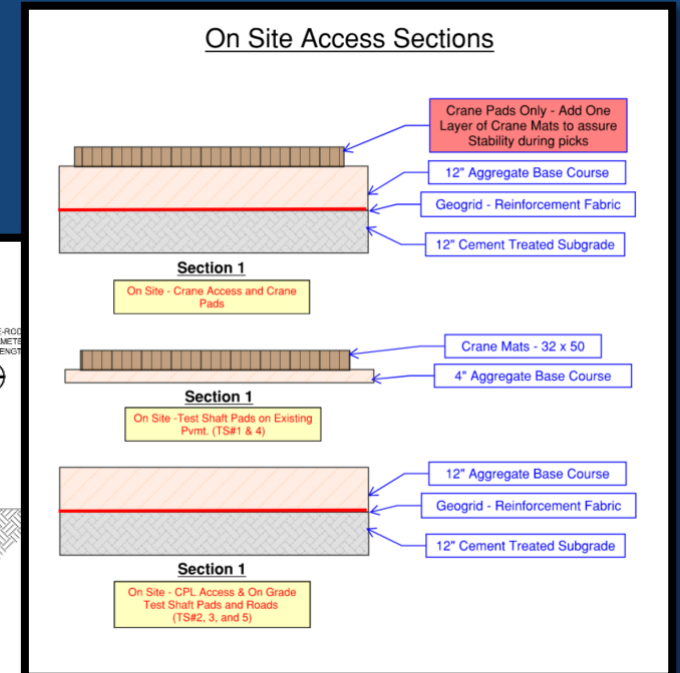
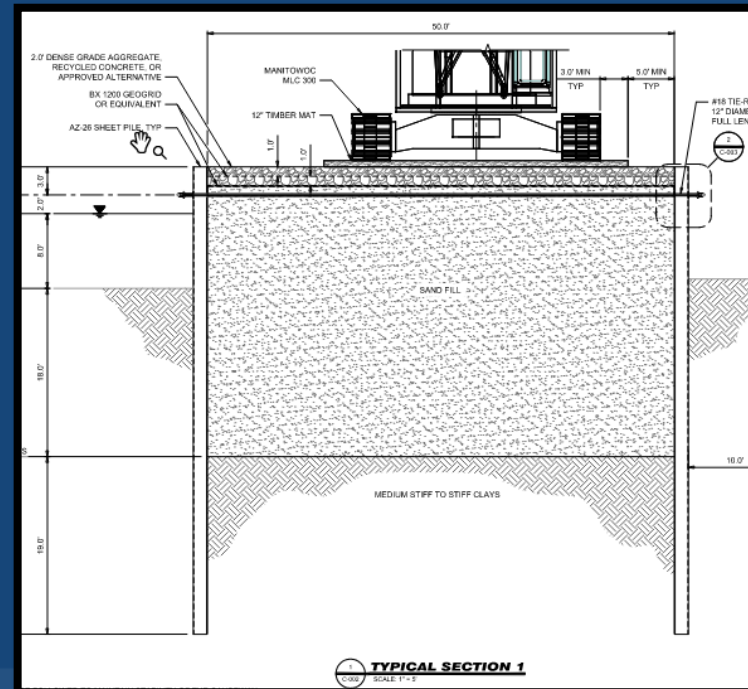
- 30,000 LF of mainline video
- 50,000 LF of side street video
- 550 Residential or Commercial locations



# EWP 2 Scope: Pre-Construction Survey and Quality Control

## Quality Control & Testing:

Provide field testing for field densities, concrete cylinders, and other testing as required.



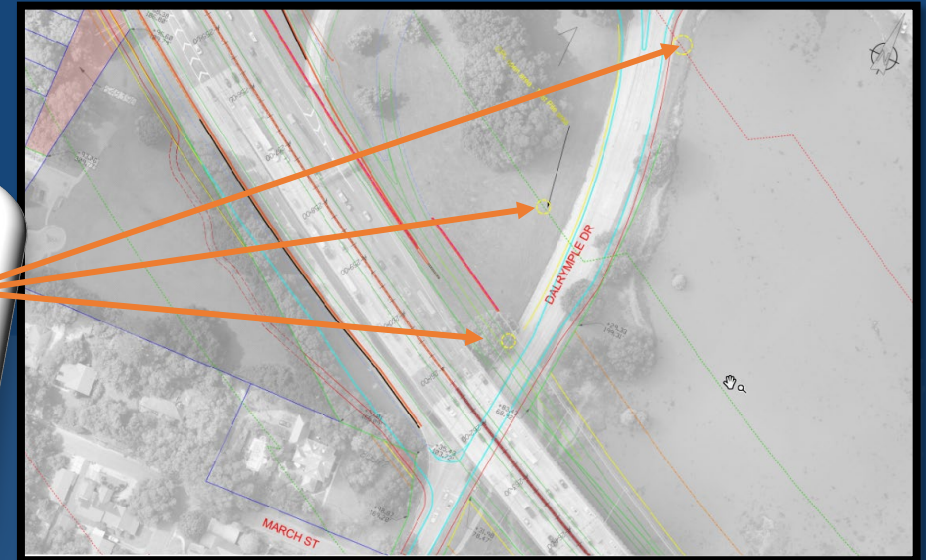
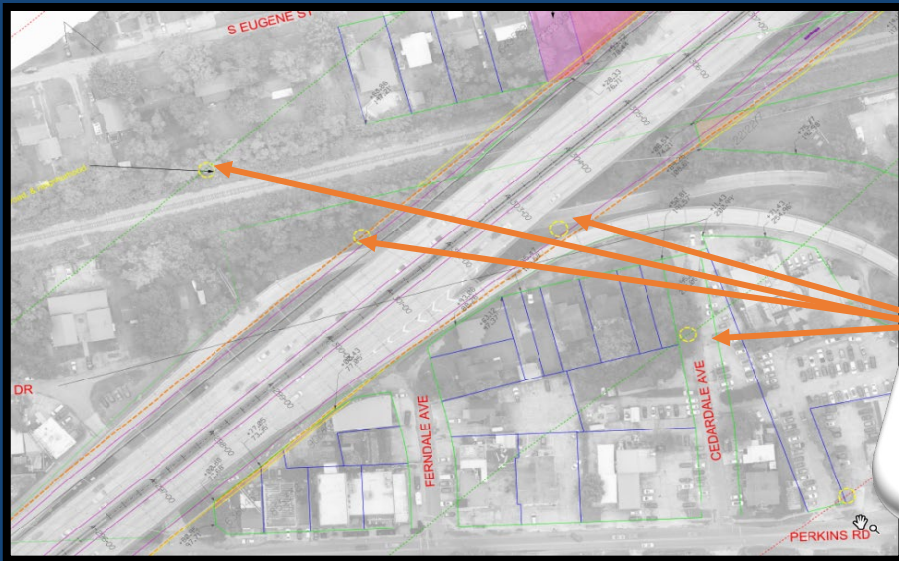


# EWP 2 Scope: Noise & Vibration Monitoring

## Noise and Vibration Scope:

Install, maintain, and provide reporting on baseline and construction noise and vibration levels

- Baseline will require approximately 24 monitoring locations for 1 week
- Construction monitoring will be required per LADOTD specification for approximately 33 days





# EWP 2 Scope: Yard Set-Up

Located at Sorrel Ave & Mansfield Ave, Baton Rouge, LA



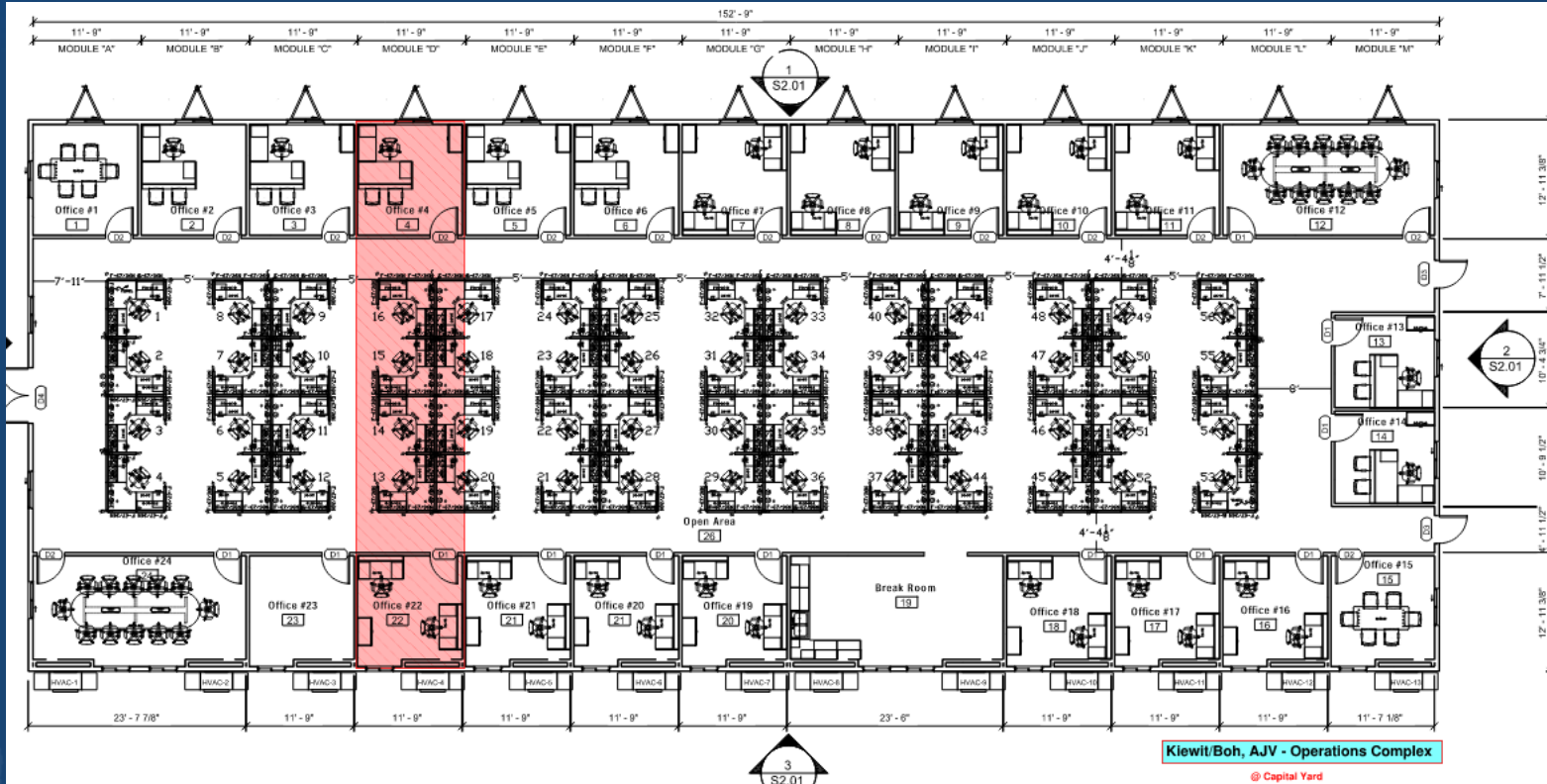
Capital Yard



GP Yard



# EWP 2 Scope: Offices



2 Trailer Complexes – 110 Workspaces



Full Remodel – 2,000 SF

# EWP 2 Scope: Maintenance of Traffic

- \* Traffic Cones/Super Cones

- \* Temporary Traffic Sign w/Stand - Left Lane Closed Ahead (W20-5)

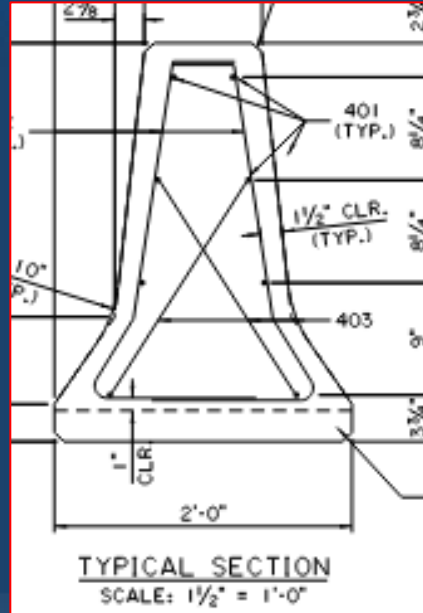
- \* Temporary Traffic Sign w/Stand - Right Lane Closed Ahead (W20-5)

- \* Temporary Traffic Sign w/Stand - Road Work Ahead (W21-1)

- \* Temporary Traffic Sign w/Stand- Shoulder Closed (W21-5a)

- \* Temporary Moveable Pedestrian Water Barrier

- \* Truck-Mounted Attenuator



Standard Supplies

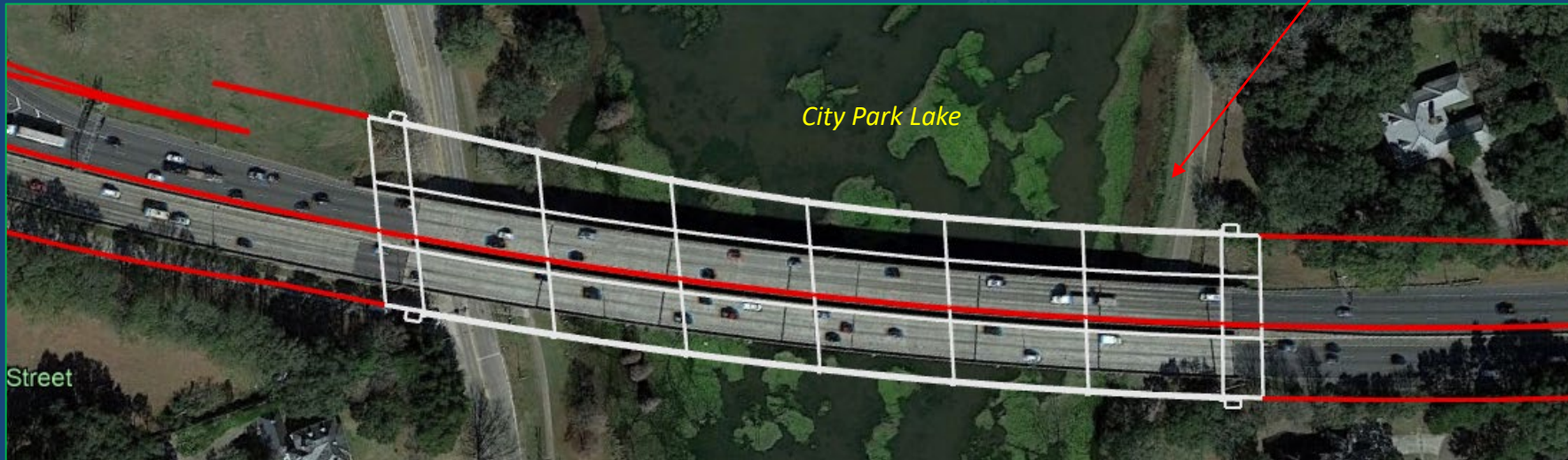
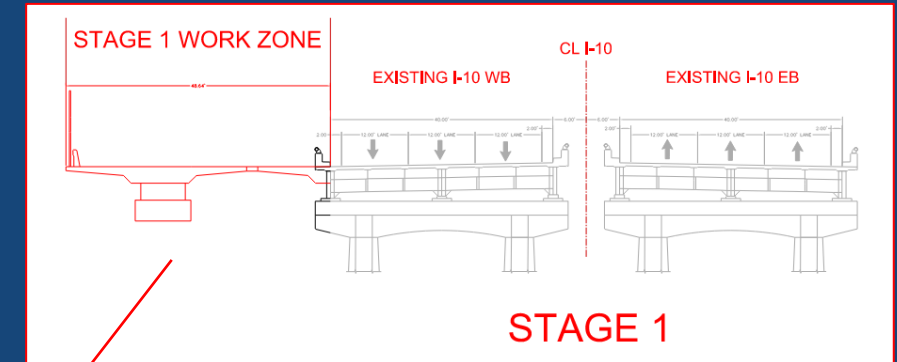
Concrete Traffic Barrier

Queue Detection Procurement



# EWP 3 Scope: Stage 1 Construction

- 2.6 Miles - Mississippi River Bridge to Acadian Thruway
- WB I-10 Widening
- Frontage Roads / Local Streets



# EWP 3 Subcontractor/Supplier Opportunities\*

EWP 3 Subcontractor Scopes of work include (but are not limited to):

- Chemical Toilets
- Clear & Grub
- Drilled Shafts
- Roadway Lighting
- Traffic Signals
- ITS
- Erosion Control
- Fencing
- Guardrail
- Maintenance of Traffic
- Concrete Barrier
- Sawcutting / Coring
- Dewatering
- Fabrication
- Rebar
- Painting
- Trash / Recycling
- Project Security
- Quality Control Testing
- Street Sweeping
- Landscaping / Mowing / Seeding
- Trucking / Hauling
- Concrete Flatwork & Paving
- Asphalt Paving
- Utilities
- Storm Drainage
- Grading / Aggregates
- Pavement Markings
- Signing
- Welding

***\*We also encourage participation by local, small, and diverse companies seeking to provide ancillary services, such as catering, printing, and office supplies.***

# Access Bid Opportunities

Follow this link to see current project bid opportunities:

<https://app.buildingconnected.com/public/624dae3f7037df00b983ca25/projects/629a54790b20c7006f01908a>

- Kiewit/Boh will notify firms of open solicitations/opportunities via direct email (to database), B2gNOW, BuildingConnected, our project website, and various local publications.
- Solicitation notices will include targeted scopes, qualifications sought, and submittal instructions

# Next Steps: Working with Kiewit/Boh

**Step 1:** Complete our Subcontractor Questionnaire to join our database and help us understand your capabilities and bidding interests.

**Step 2:** Sign-up for ***BuildingConnected*** to be added to our bidder's list!

- Create an account with Building Connected  
<https://app.buildingconnected.com/create-account>
- Follow this link to see ALL project bid opportunities:  
<https://app.buildingconnected.com/public/624dae3f7037df00b983ca25>

***KBJV utilizes BuildingConnected for bid solicitations and vendor communications regarding plans/specs/addenda.***

The screenshot shows a web form titled "I-10: LA to Essen Lane on I-10 and I-12 Phase I" with a "Subcontractor Questionnaire" section. The form includes fields for First Name, Last Name, Company Name, Email, Phone Number, Address, and Website / URL. It also has checkboxes for "Type of Work" (Professional Services, Construction, Vendor/Supplier) and a section for "Please indicate the NAICS codes/services your company performs:". Below this is a "Firm Description (Max 100 Words):" field and a section for "Please attach capability statement, if available:" with a "Drag and drop files here or browse files" button. The final field is "How many employees does your organization have?".



# What does it take to work with us?

We evaluate companies on different criteria based on specific project requirements. This may include, but is not limited to:

- ✓ Safety performance
- ✓ Proven quality
- ✓ Certification
- ✓ Insurance and bonding capability
- ✓ On-time performance
- ✓ Years in business
- ✓ Reputation
- ✓ Past performance with JV team members or Client
- ✓ Value-added products or services

**Equity • Inclusion • Opportunity • Growth**



# Resources and Assistance

Kiewit/Boh is committed to providing information and resources to assist firms seeking opportunities to participate on the Project.

- Project Website
- Bidders' Quick Reference Guide
- ***Coming soon!*** "Roadside Assistance" Workshop Series

The image displays three overlapping screenshots of the Kiewit/Boh project website. The top screenshot shows the main navigation bar with links: Project Overview, Our Team, DBE Goals, Contract Opportunities, Events, Resources, and Stay Connected. Below this is a large banner with the word "Resources" and a quote: "We're building more than infrastructure; we're building opportunities. Kiewit believes in partnering and investing in the local, small, and diverse businesses in the communities where we work and live." To the right of the banner is a yellow box titled "ORGANIZATIONS AND RESOURCES FOR SMALL, LOCAL AND DISADVANTAGED BUSINESS ENTERPRISES". The middle screenshot shows a section titled "ORGANIZATIONS / RESOURCES FOR SMALL DISADVANTAGED BUSINESS ENTERPRISE" with a commitment statement and a list of federal agencies: U.S. Department of Commerce, Minority Business Development, U.S. Department of Transportation, and U.S. Department of Homeland Security. The bottom screenshot shows a "BIDDER'S QUICK REFERENCE GUIDE - NEXT STEPS AND RESOURCES" section. It includes a "JOIN OUR DATABASE!" section with two steps: 1. Complete our Subcontractor Questionnaire, and 2. Create an account with BuildingConnected at buildingconnected.com. It also has a "STAY INFORMED!" section, a "GOAL AND CERTIFICATION INFORMATION" section detailing DBE goals, and a "CONNECT WITH US!" section with contact information: Email: J-10CMAROutreach@Kiewit.com and Visit: www.buildwithKiewit-Boh.com. A photograph of a highway with traffic is at the bottom of this section.

# QUESTIONS & ANSWERS

## PHASE I

OF THE I-10: LA 415 TO ESSEN LANE ON I-10 AND I-12  
CONSTRUCTION MANAGEMENT AT RISK PROJECT

# Stay Tuned for Future Events

Kiewit/Boh is seeking opportunities to engage with local, small, and diverse companies interested in performing work on the Project.

Stay tuned! Information on future events will be shared via email, B2gNOW, and our project website.



**AIM YOUR SMART PHONE CAMERA  
HERE  
TO ADD US TO YOUR CONTACTS.**



**Email:**

**I-10CMAROutreach@kiewit.com**



**Website: [www.buildwithkbjv.com](http://www.buildwithkbjv.com)**



# **Diverse Subcontractor and Supplier Outreach**

## **PHASE I**

**OF THE I-10: LA 415 TO ESSEN LANE ON I-10 AND I-12  
CONSTRUCTION MANAGEMENT AT RISK PROJECT**

***Thank you for joining us!***